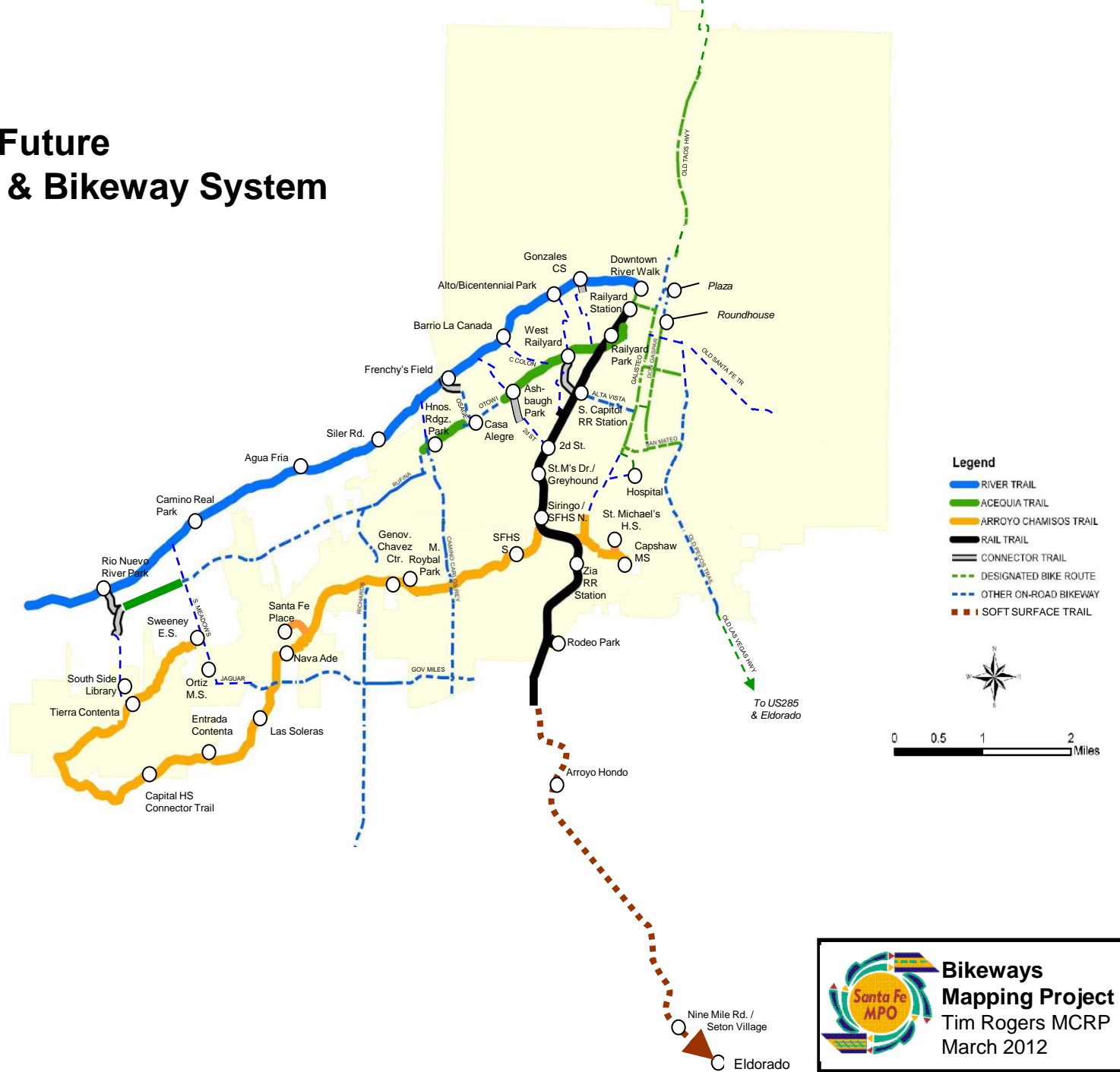


A paved trail runs alongside a gravel area and a wooden fence. In the foreground, a woman in a blue shirt and black shorts is riding a bicycle towards the camera. Behind her, a woman in a black tank top and leggings is walking. Further down the trail, a man in a white shirt is riding a bicycle. In the background, there are trees, a bus, and mountains under a clear blue sky.

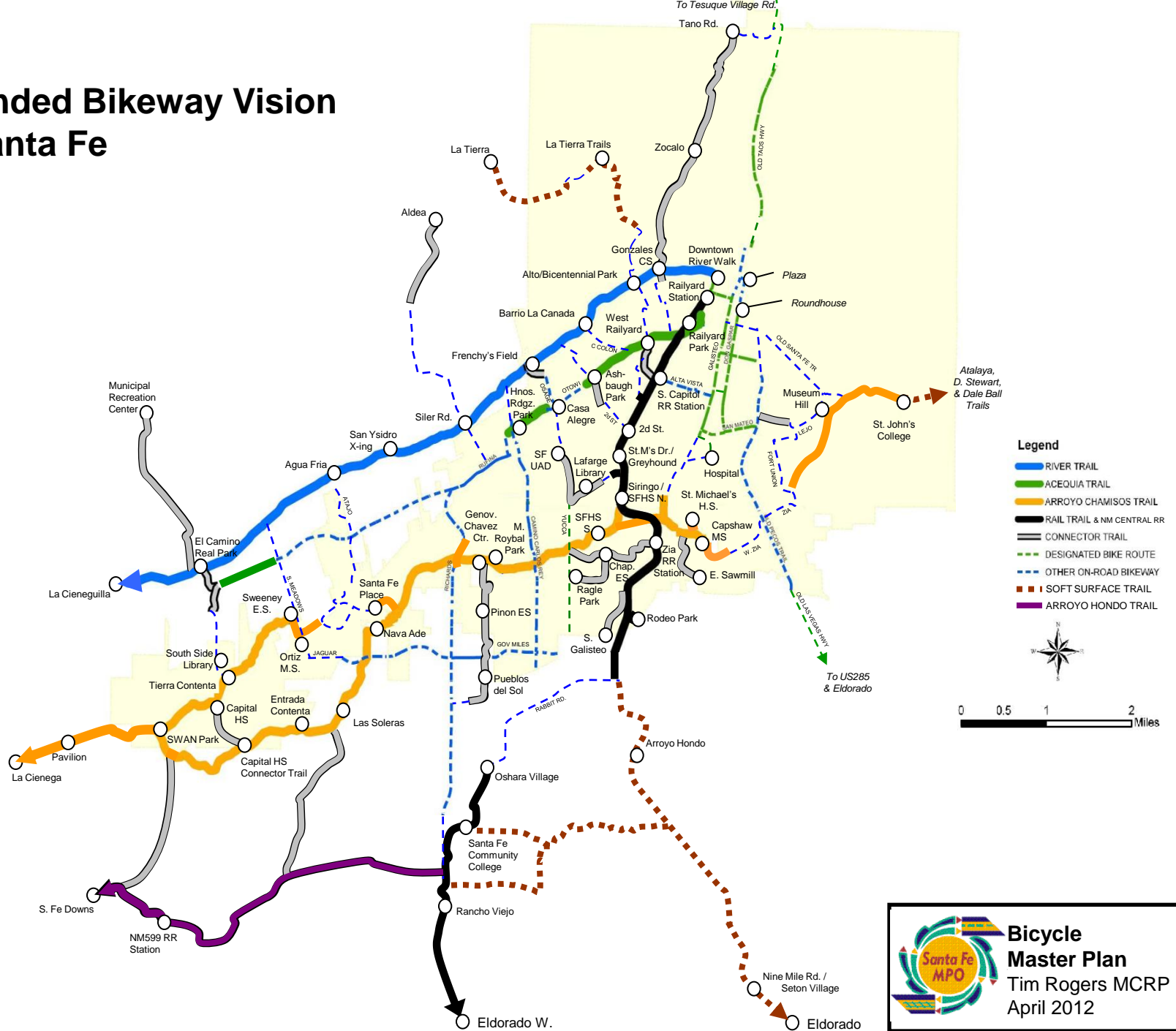
# Trails for Transportation & Health

Tim Rogers, MCRP  
Presentation for Southwest Trails Conference  
Oct. 10, 2012

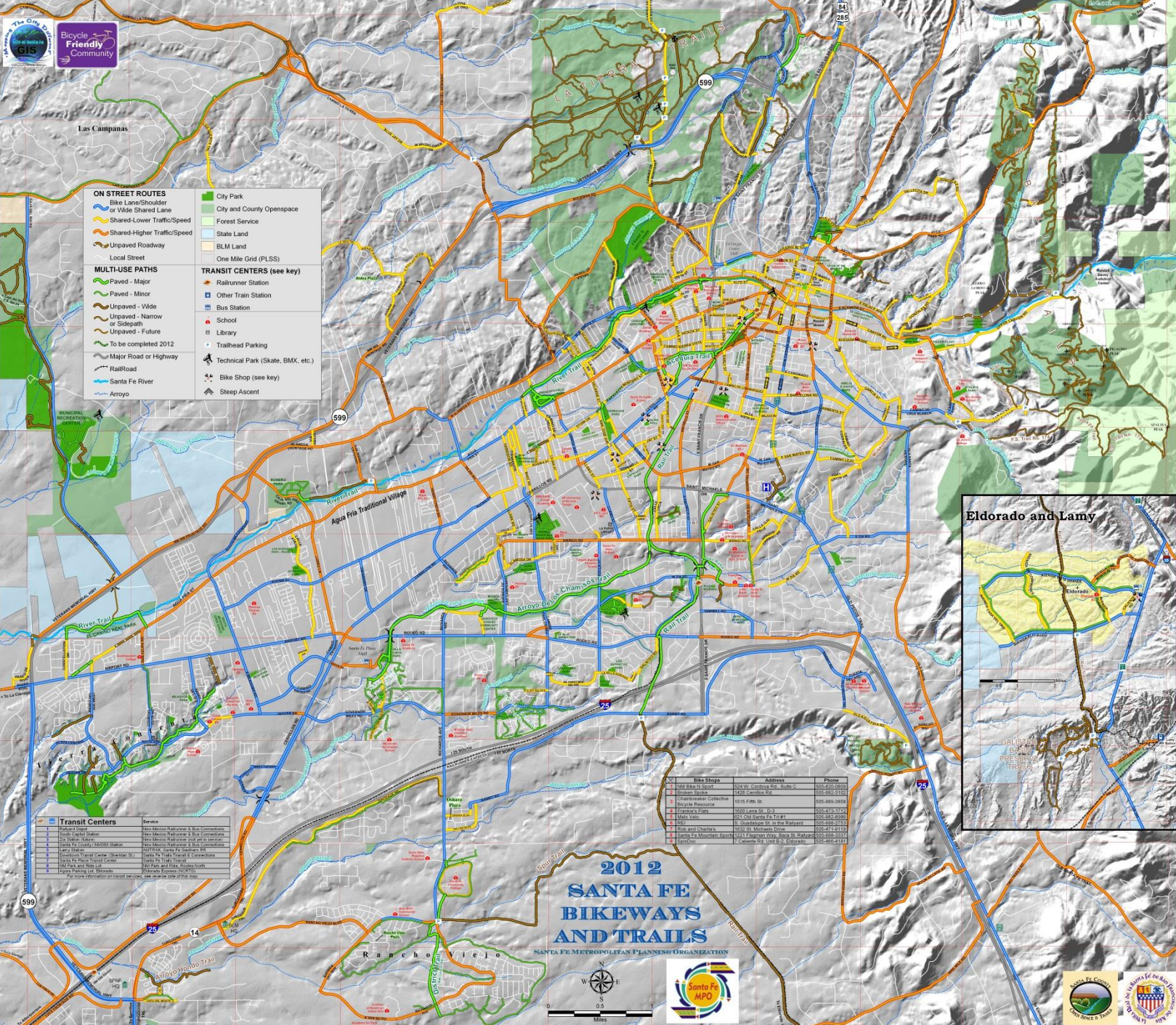
# Santa Fe's Future Urban Trail & Bikeway System



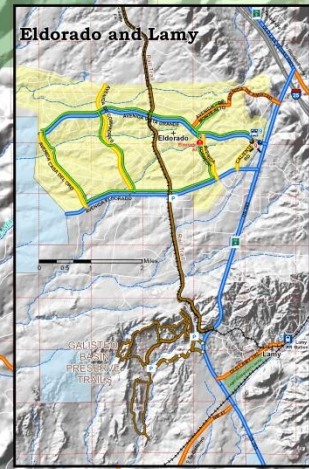
# Expanded Bikeway Vision for Santa Fe







- ON STREET ROUTES**
- Bike Lane/Shoulder
  - For Wide Shared Lane
  - Shared-Lower Traffic/Speed
  - Shared-Higher Traffic/Speed
  - Unpaved Roadway
  - Local Street
- MULTI-USE PATHS**
- Paved - Major
  - Paved - Minor
  - Unpaved - Wide
  - Unpaved - Narrow or Sidepath
  - Unpaved - Future
  - To be completed 2012
  - Major Road or Highway
  - Railroad
  - Santa Fe River
  - Arroyo
- TRANSIT CENTERS (see key)**
- Railrunner Station
  - Other Train Station
  - Bus Station
  - School
  - Library
  - Trailhead Parking
  - Technical Park (Skate, BMX, etc.)
  - Bike Shop (see key)
  - Steep Ascent
- Other Features:**
- City Park
  - City and County Openspace
  - Forest Service
  - State Land
  - BLM Land
  - One Mile Grid (PLSS)



Bike Shops	Address	Phone
1. BMX Bike N' Sport	624 W. Candelaria Rd. Suite C	505-420-0800
2. Canyon Cycle	1240 Canyon Blvd.	505-420-1212
3. Chameleon Collective	1915 Pecos St.	505-840-3444
4. Canyon Cycle	1000 Levee St. #3	505-475-1112
5. Canyon Cycle	6121 Old Santa Fe Trail	505-420-0800
6. Canyon Cycle	1000 Levee St. #3	505-475-1112
7. Canyon Cycle	1000 Levee St. #3	505-475-1112
8. Canyon Cycle	1000 Levee St. #3	505-475-1112
9. Canyon Cycle	1000 Levee St. #3	505-475-1112
10. Canyon Cycle	1000 Levee St. #3	505-475-1112

# 2012 SANTA FE BIKEWAYS AND TRAILS

SANTA FE METROPOLITAN PLANNING ORGANIZATION











LA TIERRA

Water Tank

599

P

P

P

P

VETERANS MEMORIAL HWY

CAMINO DE MONTONYAS

MICO



# Urban Multi-Use Trails: Design Matters!



Insist on AASHTO



# Wayfinding



Acequia Trail at Felipe St.



# Complete Streets = Bike Lanes or Paved Shoulders on Major Roads



Rabbit Road



# Complete Streets = Sidewalks where needed



US550 in Cuba,  
New Mexico



# “Side Paths” (Trails along roads)

Not a recommended strategy for bikes



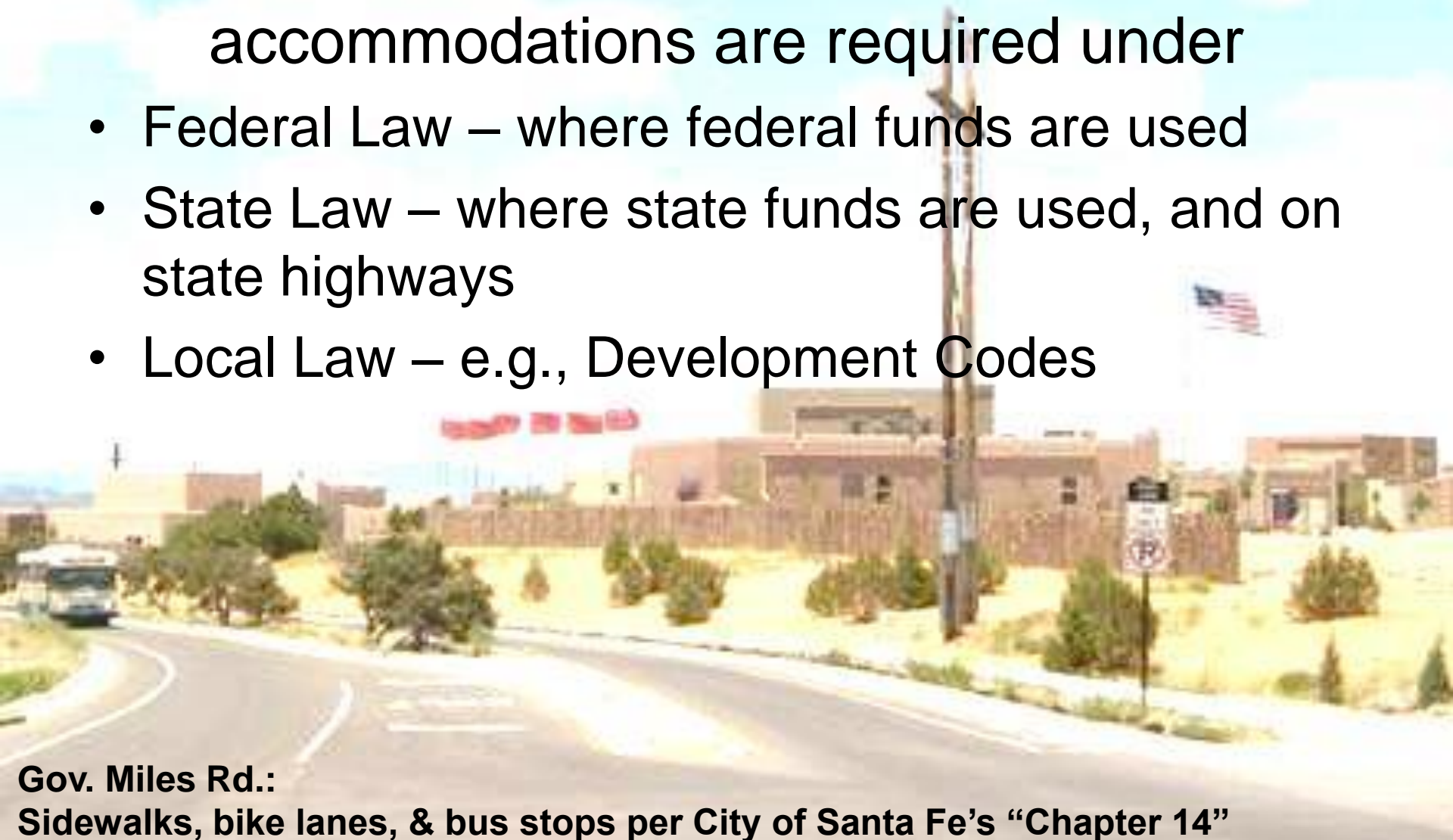
Courtesy National Highway Institute  
Bicycle Facility Design Training Materials



# Complete Streets:

Appropriate Bicycle and Pedestrian accommodations are required under

- Federal Law – where federal funds are used
- State Law – where state funds are used, and on state highways
- Local Law – e.g., Development Codes



**Gov. Miles Rd.:**

**Sidewalks, bike lanes, & bus stops per City of Santa Fe's "Chapter 14"**





NM14 near Madrid:  
“Partial Paving”





**NM41 near Galisteo:  
Bicycle Coalition of New Mexico & NMDOT District 5  
An Advocacy Success Story?**



Dedicated  
Funding Sources  
for Trails  
& Other  
Bicycle and Pedestrian  
Facilities



# Federal Funding Sources

Under past Federal Transportation Bills

(e.g. TEA-21 & SAFETEA-LU)

- Recreational Trails Program  
*(through NM State Parks)*
- Transportation Enhancements
  - Safe Routes to School
  - Highway Safety Funds
- Special sources for large urban areas  
*(through NMDOT)*





You are invited to attend the  
GRAND OPENING  
for the newly completed section of the  
Santa Fe Rail Trail

Federally funded through  
Transportation  
Enhancements

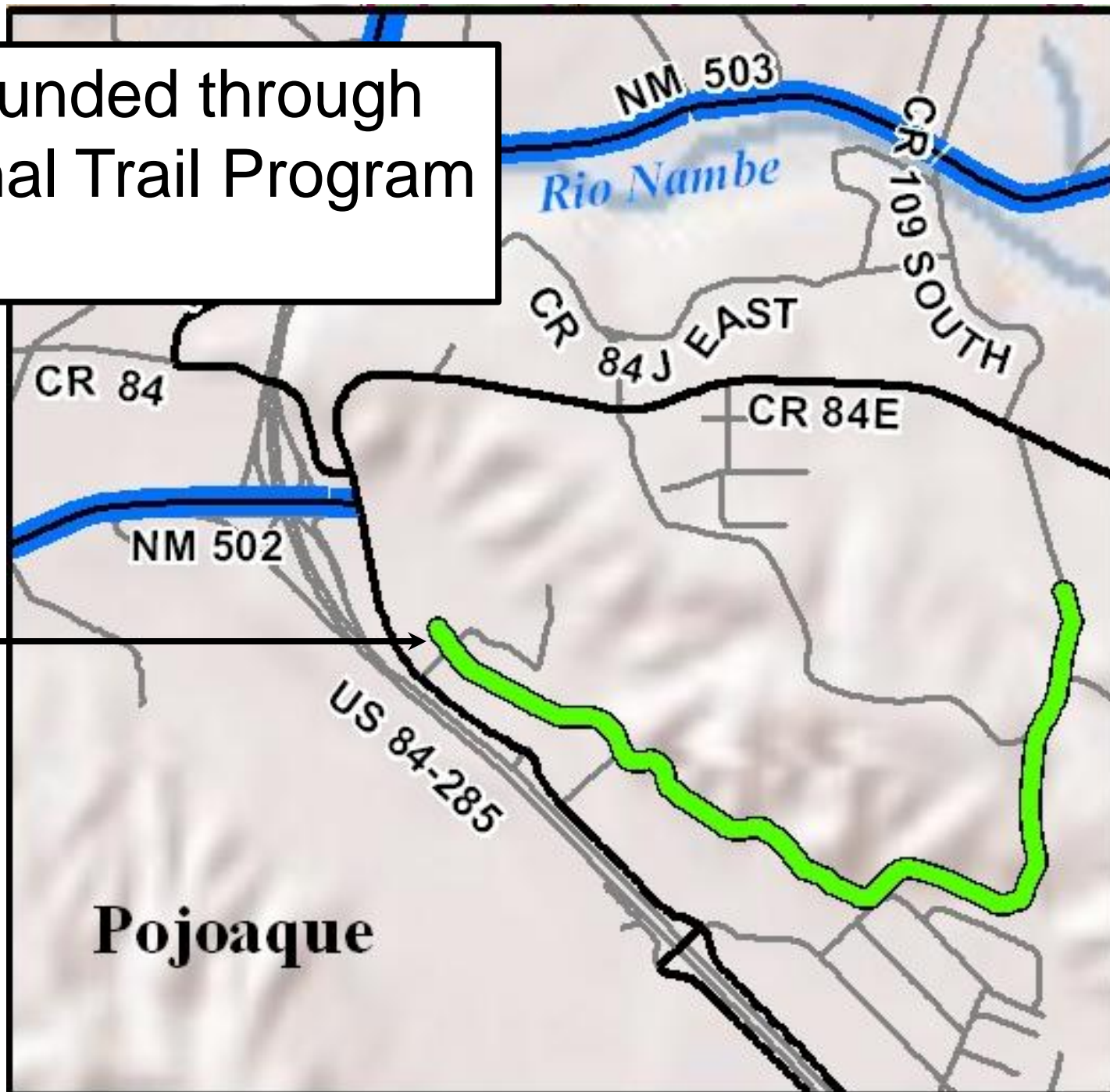
SATURDAY  
OCTOBER 6, 2012  
10:00 A.M.

Rabbit Road Trailhead  
Intersection of Rabbit  
Road  
& the Railroad

COME CELEBRATE!!  
HIKE, BIKE, RUN, RIDE THE TRAIL



Federally funded through  
Recreational Trail Program  
Funds



2012 Santa Fe  
Bikeways and  
Trails Map,  
Reverse side:  
Greater Santa Fe  
Area,  
Pojoaque Inset

# Federal Funding Sources

Under “MAP-21” (2012)

- Recreational Trails Program  
*(through NM State Parks)*
- Transportation Alternatives  
    ? ? ? ? ?  
*(through NMDOT)*



# Gaining Access to Federal Funding for Trails in New Mexico

- NMSP Recreational Trails Program

- Metropolitan Planning Organizations

*(Albuq., Farmington, Las Cruces, Santa Fe, and El Paso metropolitan areas)*

- Regional Planning Organizations

*(All other locations)*

& your local NMDOT District

# State Funding for Trails

- Capital Outlays: A thing of the past?



**Rail Trail, Gail Ryba Trail, and St. Francis Underpass**



# Local Support for Trails, Bikeways and Sidewalks

- Bond Issues,  
e.g. in Santa Fe
  - CIP (Capital Improvement Program)
  - Opportunity Bond for Parks and Trails
- Renewable Sources  
e.g. Gross Receipts Tax
- Volunteer Labor & In-Kind Donations

# The Public Health Connection: Allies in Advocacy for Active Transportation



Statewide Public Health Planning:

Healthier Weight Council,  
Complete Streets Leadership Team

Chronic Diseases Council  
Shared Strategic Plan

# Prescription Trails



Frenchy's Field



# Safe Routes to School



**Walk & Roll  
to School Day,  
Cesar Chavez  
Community School,  
Santa Fe, Oct. 3, 2012**





# UNM Prevention Research Center, NMDOH, & CDC Community Transformation Grant for Rural New Mexico



**Counting Bicyclists and Pedestrians in Cuba NM**



# Integrating walking and biking into everyday transportation



- Health
- Environment
- Recreation
- Community Development
- Economic Development . .

# Thank you!

Tim Rogers MCRP



- Pedestrian Planning
- Bicycle Planning
- Safe Routes to School



411 Cortez Pl., Santa Fe NM 87501  
(505) 629-5647  
timro@hotmail.com

Member, Association of Pedestrian and Bicycle Professionals