

TRAIL CLOSURES

On June 1, 2018, Santa Fe National Forest closed public access due to fire restrictions. Santa Fe County also announced closure of its adjoining open space within Dale Ball Trails (Picacho Peak area) as well as La Piedra and Little Tesuque Open Space. The rest of County trails and all City trails, including most of Dale Ball Trails, remain open. The map on the right illustrates how the closure affects our local foothill trails.



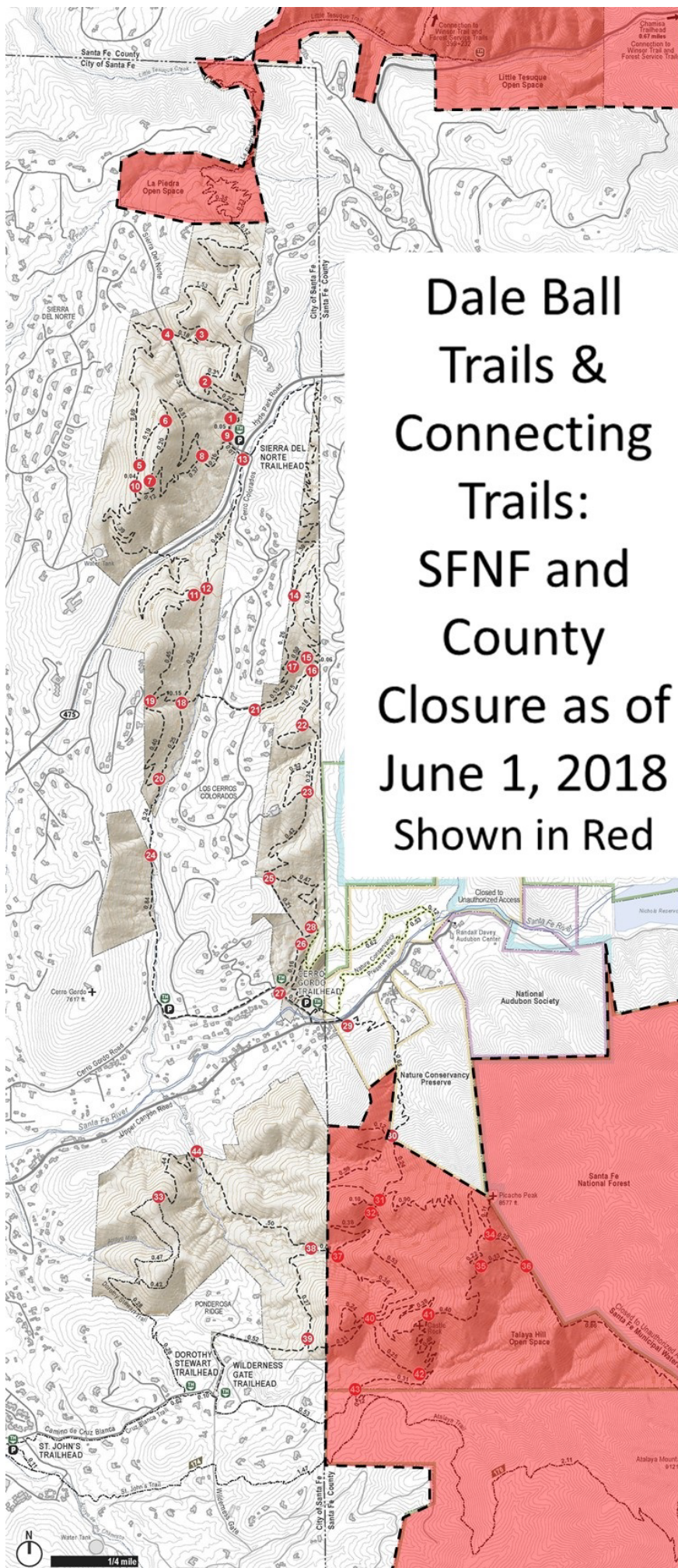
Santa Fe Conservation Trust

PO Box 23985
Santa Fe, NM 87502

(505) 989-7019

info@sfct.org

www.sfct.org



**Dale Ball
Trails &
Connecting
Trails:
SFNF and
County
Closure as of
June 1, 2018
Shown in Red**