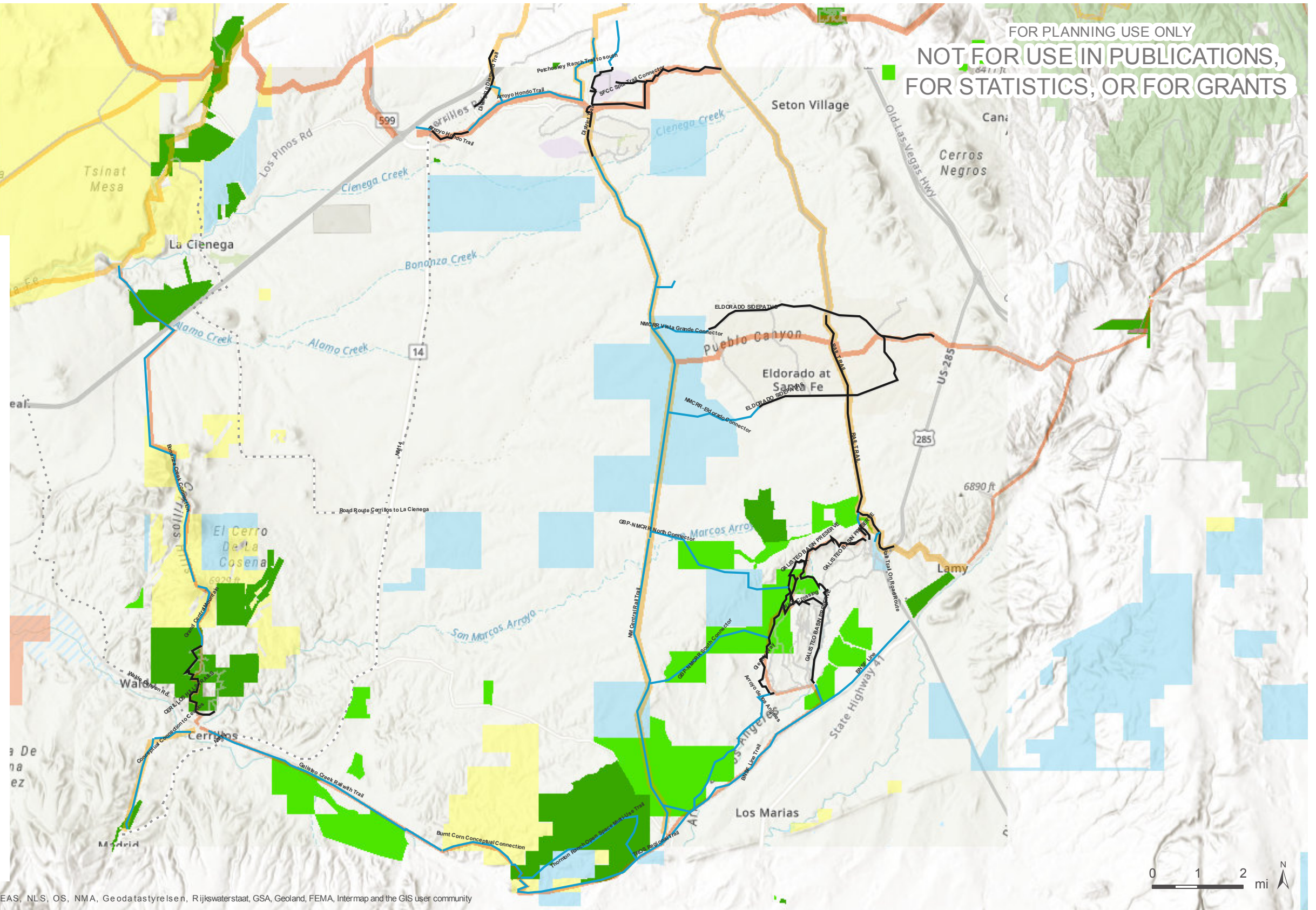


FOR PLANNING USE ONLY
 NOT FOR USE IN PUBLICATIONS,
 FOR STATISTICS, OR FOR GRANTS

- Legend**
- GUSTO Trails**
- Built
 - Proposed (Build New)
 - Road
- GUSTO Conceptual Loops and Spokes**
- Main Loop
 - Secondary Loop
 - Outer Loop
 - Main Spoke
 - Secondary Spoke
- Conservation Data**
- Santa Fe Conservation Trust Properties
 - National Conservation Easement Database
 - Conservation Almanac
 - Conserved Land (PADUS)
- Surface Ownership**
 <all other values>
- BLM
 - FS
 - NPS
 - Other Federal
 - SLO
 - Other State
 - Tribal



Credits: Sources: Esri, USGS, NGA, NASA, CGIAR, N Robinson, NCEAS, NLS, OS, NMA, Geodastystyrelsen, Rijkswaterstaat, GSA, Geoland, FEMA, Intermap and the GIS user community

GUSTO Study Area 4: Rail Trail to I-25 / NM599 Station

Created in ArcGIS Online for Organizations

March 27, 2019. Copyright © The Trust for Public Land. The Trust for Public Land and The Trust for Public Land logo are federally registered marks of The Trust for Public Land. Information on this map is provided for purposes of discussion and visualization only. www.tpl.org



Santa Fe Conservation Trust

