

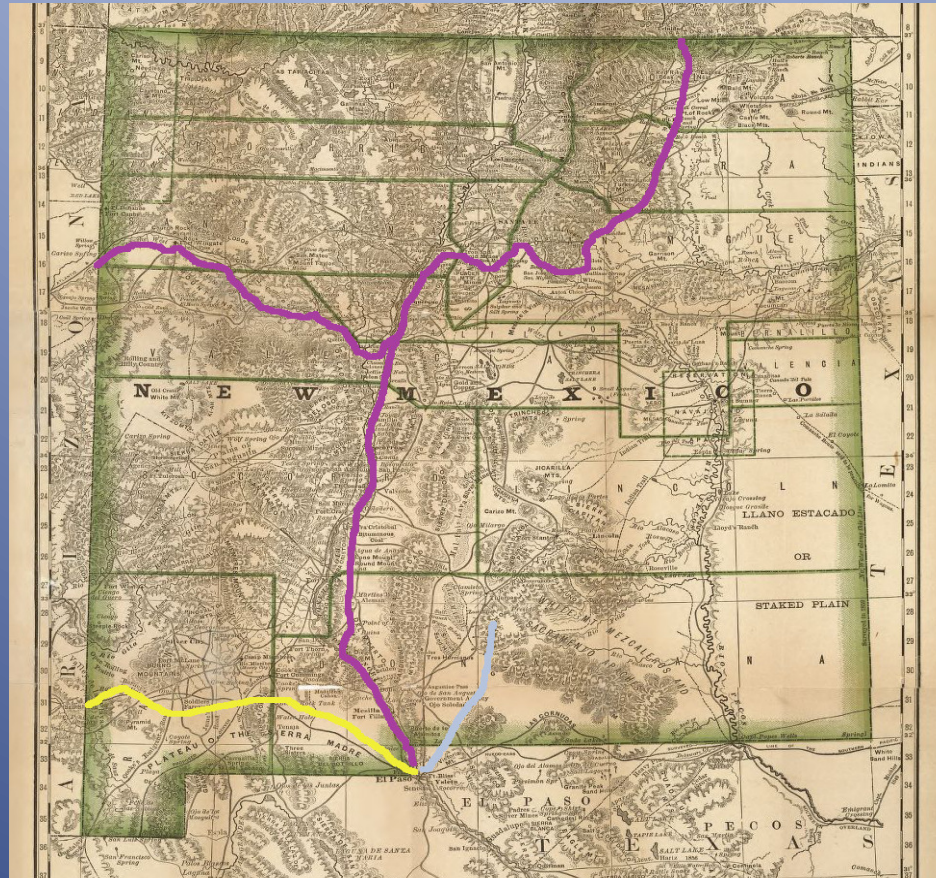
# New Mexico Railroads and New Mexico Rails-to-Trails Association

Lynn Melton  
[lynnmelt@gmail.com](mailto:lynnmelt@gmail.com)



# EP&NE

October 1897 - June 1898



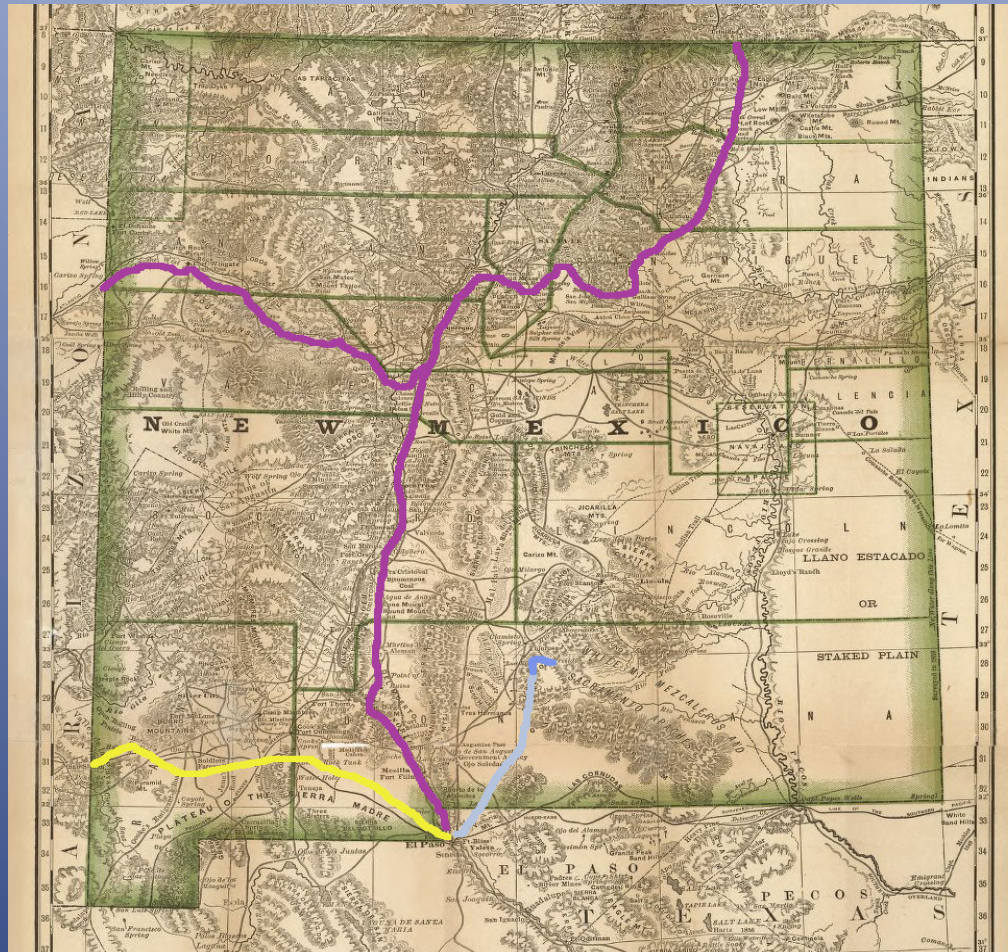
Alamogordo founded in June 1898

1879 Rand-McNally map - Library of Congress



# Alamogordo & Sacramento Mountains RR

April 1898 – November 1898

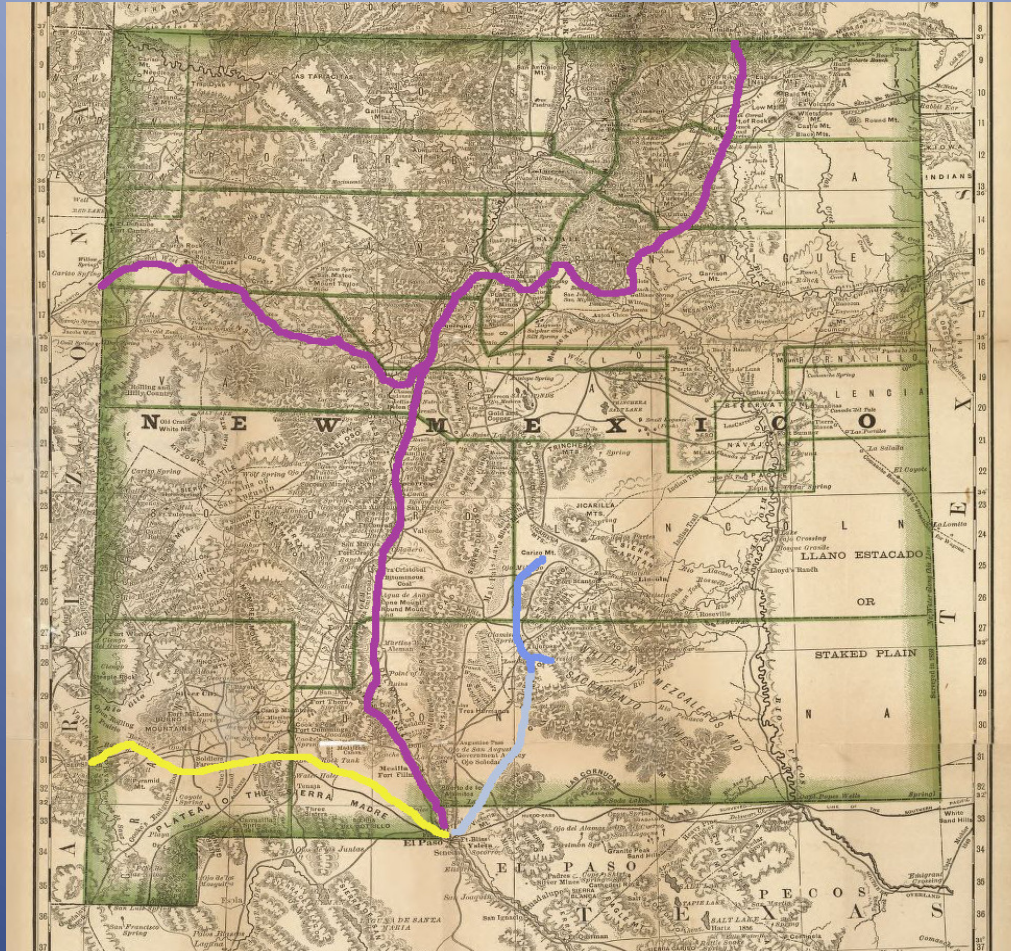


Alamogordo to Toboggan Gulch



# EP & NE

November 1898 – June 1899

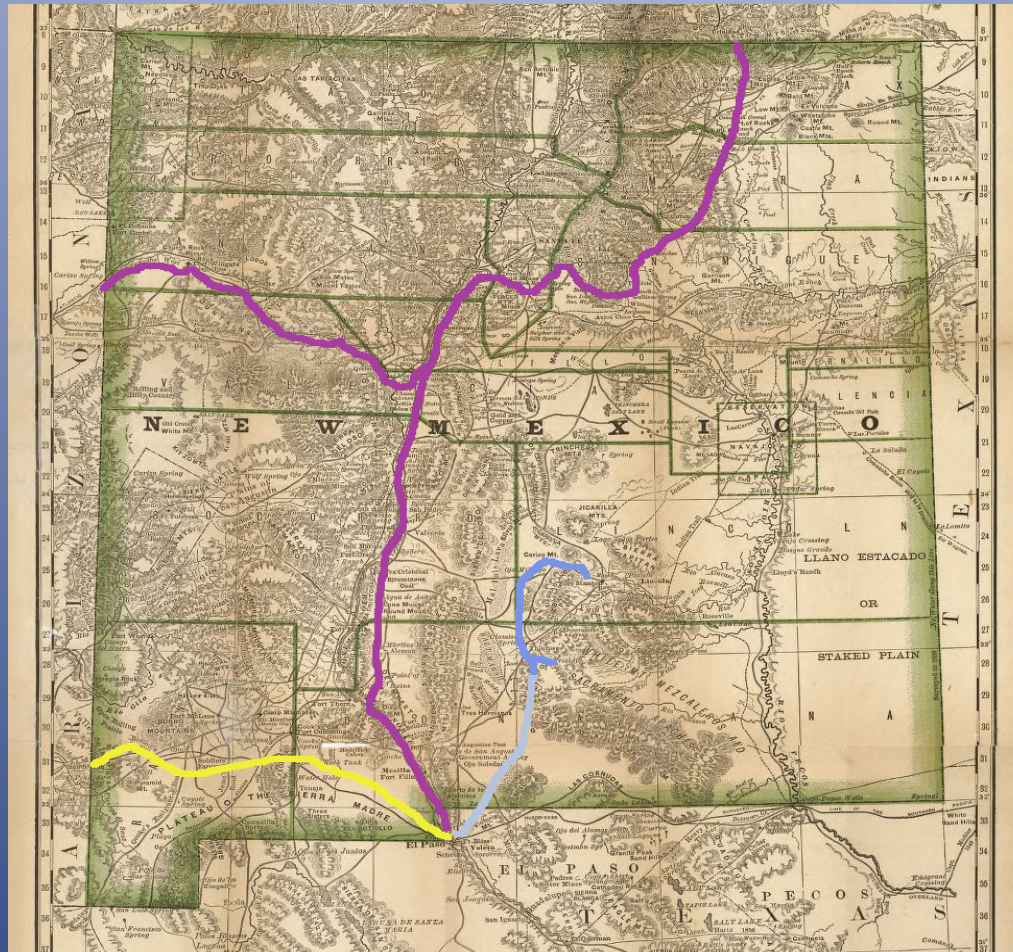


Alamogordo to Carrizozo



# EP & NE (Capitan Branch)

June 1899 – September 1899

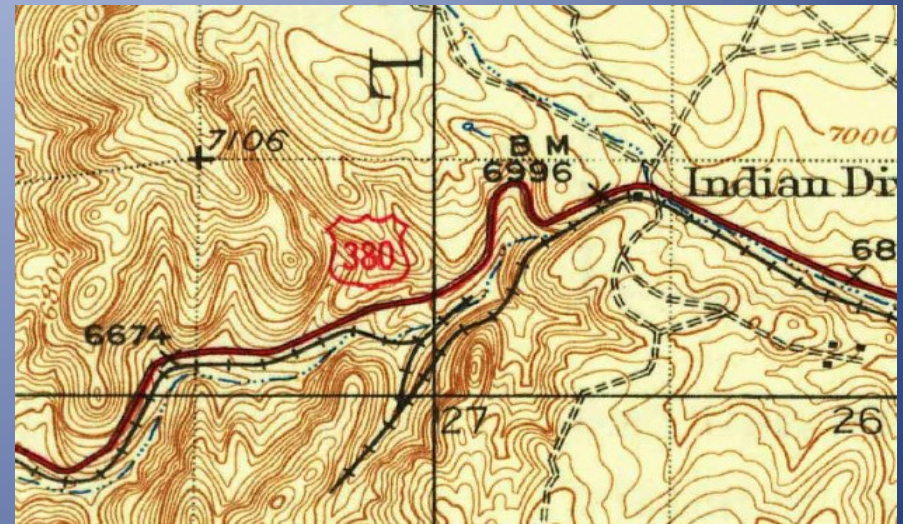


Build to Salado Flats-Capitan-Coalora

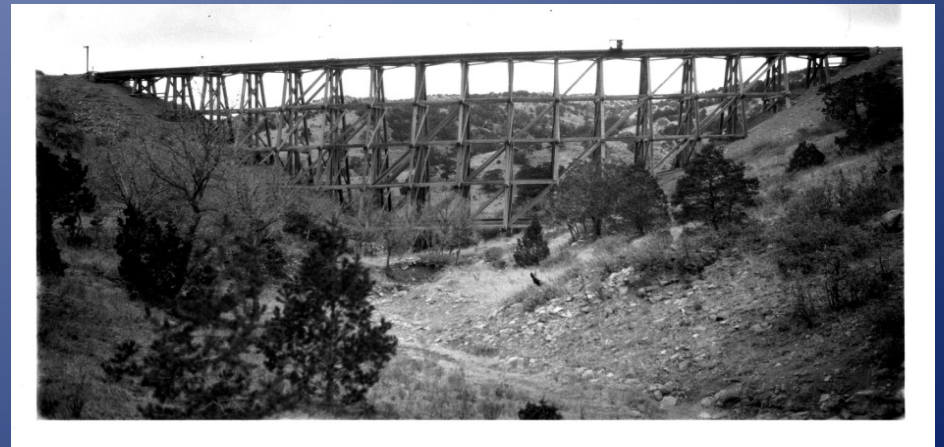


# EP & NE (Capitan Branch)

June 1899 – September 1899



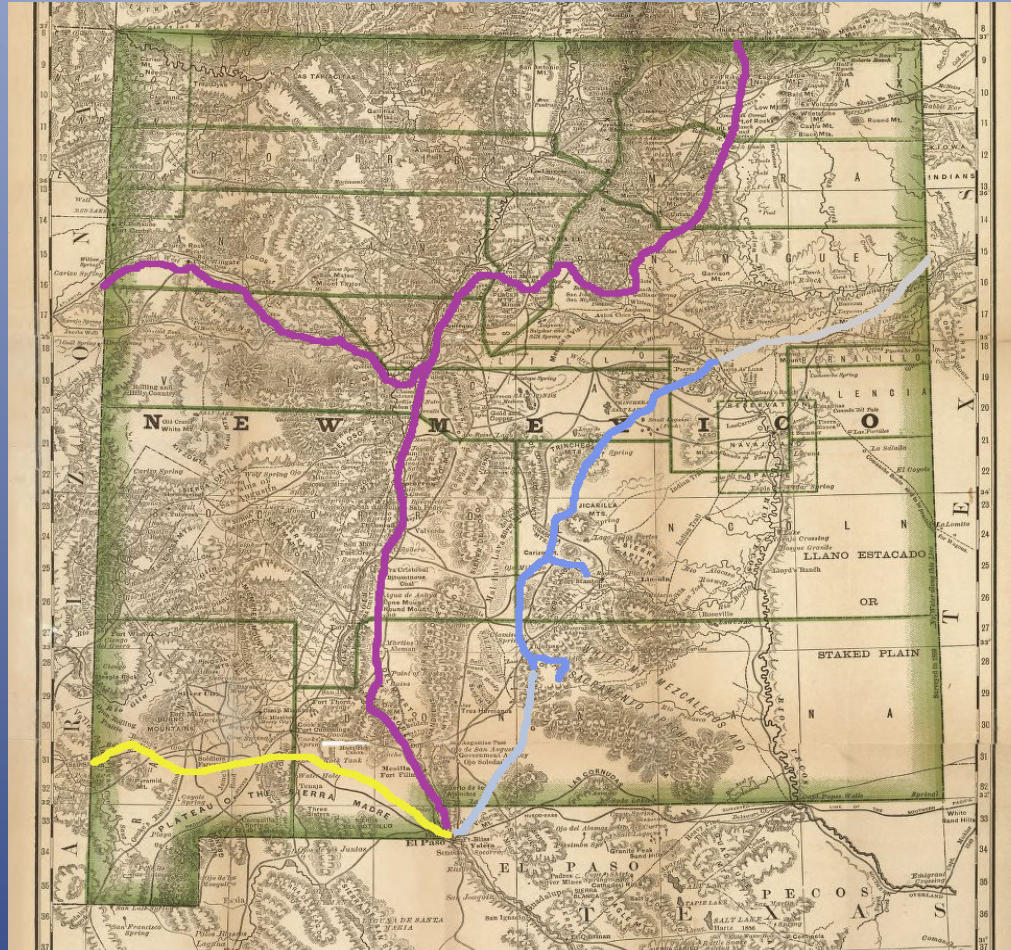
Indian Divide region had a switchback and an 85' high trestle.





# EP & NE/El Paso and Rock Island RR

June 1900 – December 1900





# EP & NE (Dawson Line)

December 1901 – August 1902



Dawson Line

Maxwell coal replaced Capitan coal



# NMRTA Mission....

- Convert abandoned railroad lines in the Sacramento Mountains into multi-use, multi-access recreation trails.

*Alamogordo-Sacramento Mountains Rail Road...  
the Cloud-Climbing Rail Trail*

- Combine these with other area trails to provide a 68 mile 'Enchanted Trail' loop.



# NMRTA

- Formed in 1994 in Cludcroft
- Four founders...
  - Mitzi Brownfield, Judy Henry, Tom and Barbara Springer
- 501 c (3) Non-Profit
- All volunteer
- 250 business, family and individual members
- Funded by membership dues, grants, donations





# Monthly Workdays...

- 3rd Saturday...3 hours
- Usually 5-10 volunteers [“carpenters” and “loppers”]
- Maintain trails and structures
- Create new trails
- Construction (e.g.)...
  - Trestle rebuilding/bypass trail
  - Bridges...Shelters
  - Erosion control/repair



# Work closely with the Forest Service...

- They provide tools, heavy equipment, operators for our trail work.
- We sometimes do 'cost sharing.' We record volunteer hours, and Forest Service credits us and pays for materials.





# NMRTA in Northern New Mexico?

- The Board would probably be receptive.
- Different chapters?
- Details probably could be worked out.





# A&SM → Trails





# A&SM → Trails

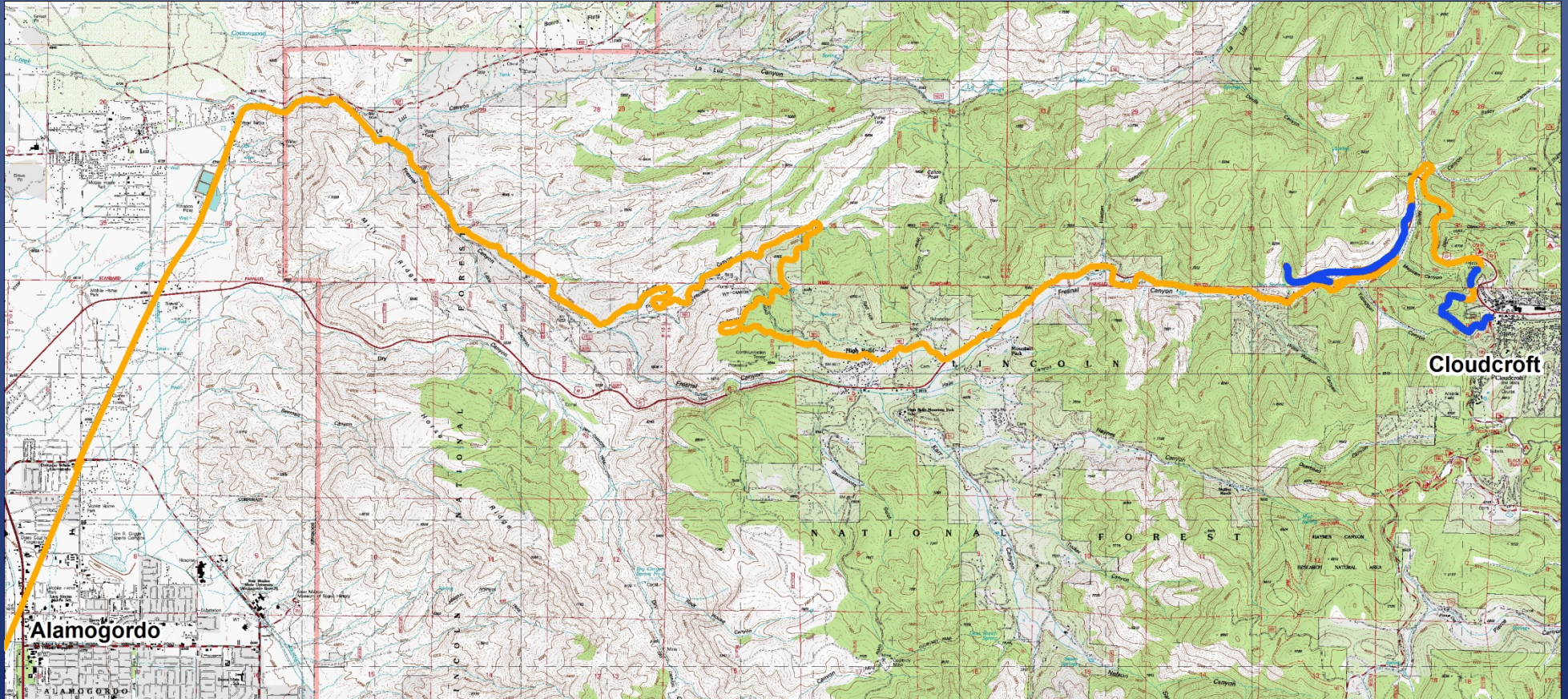
## “Cloud Climbing Trestle Trail” 1994-2002





# A&SM → Trails

## “Switchback Trail” 2003





# Harkey Pedestrian Bridge...

Spearheaded by 'Rails-to-Trails'

Funded by grant & donations

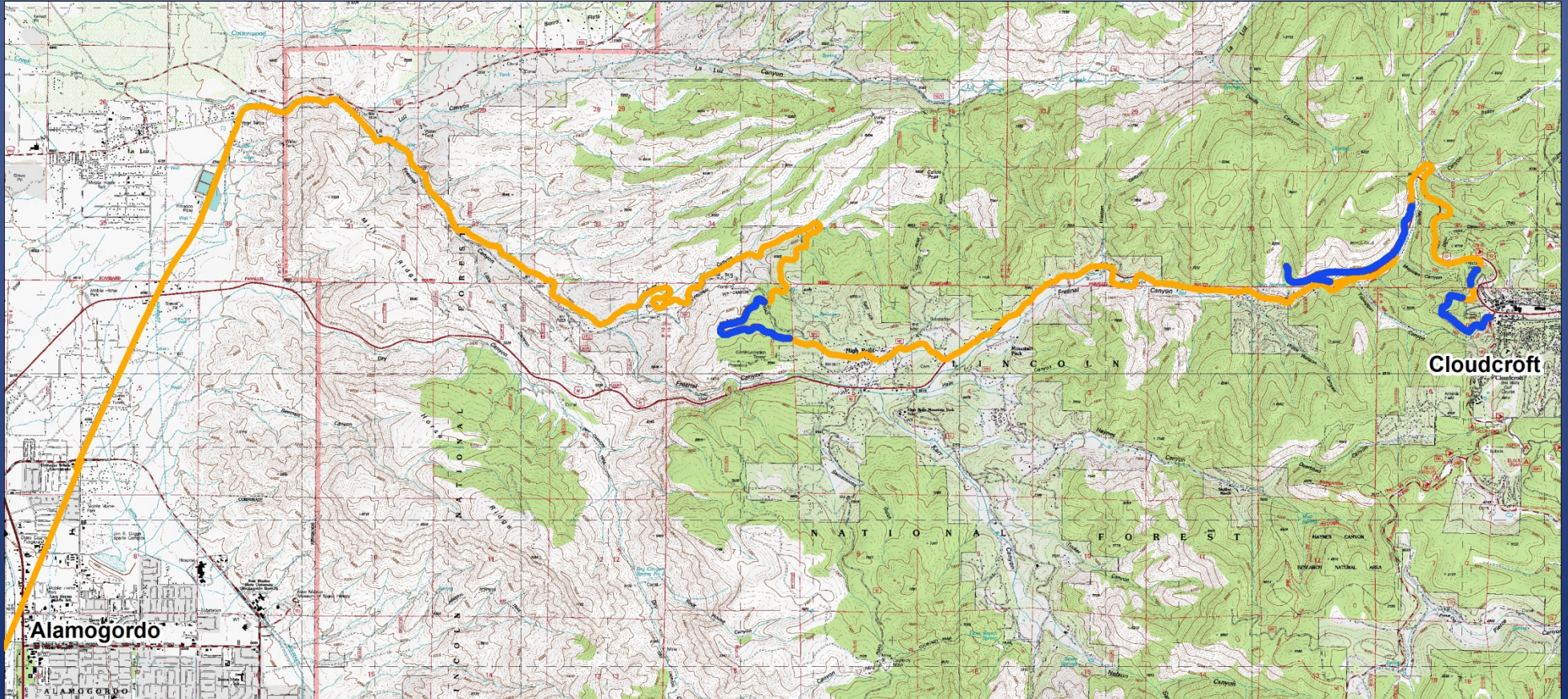
Built by contractor





# A&SM → Trails

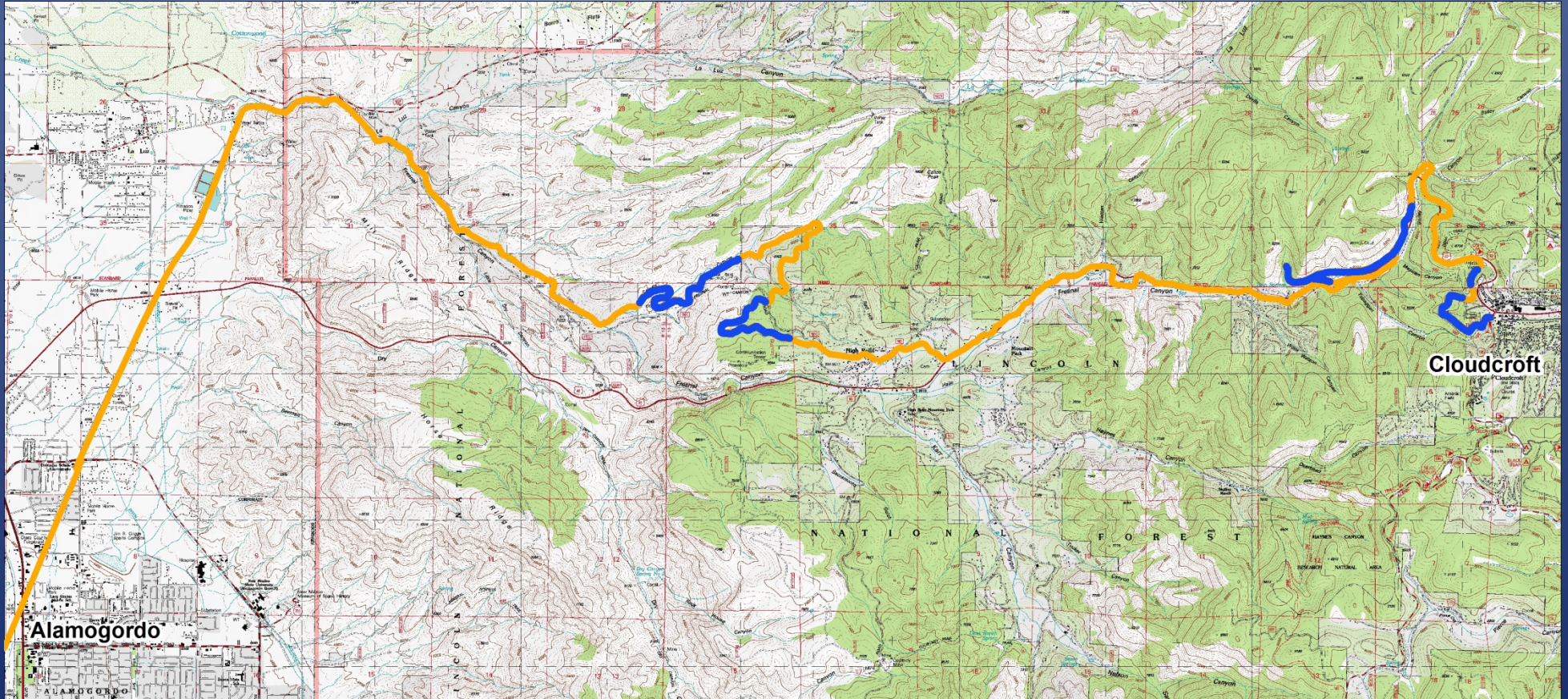
## “Grandview Trail” 2005





# A&SM → Trails

## “Salado Canyon Trail” 2007





# Salado Canyon Trestle...

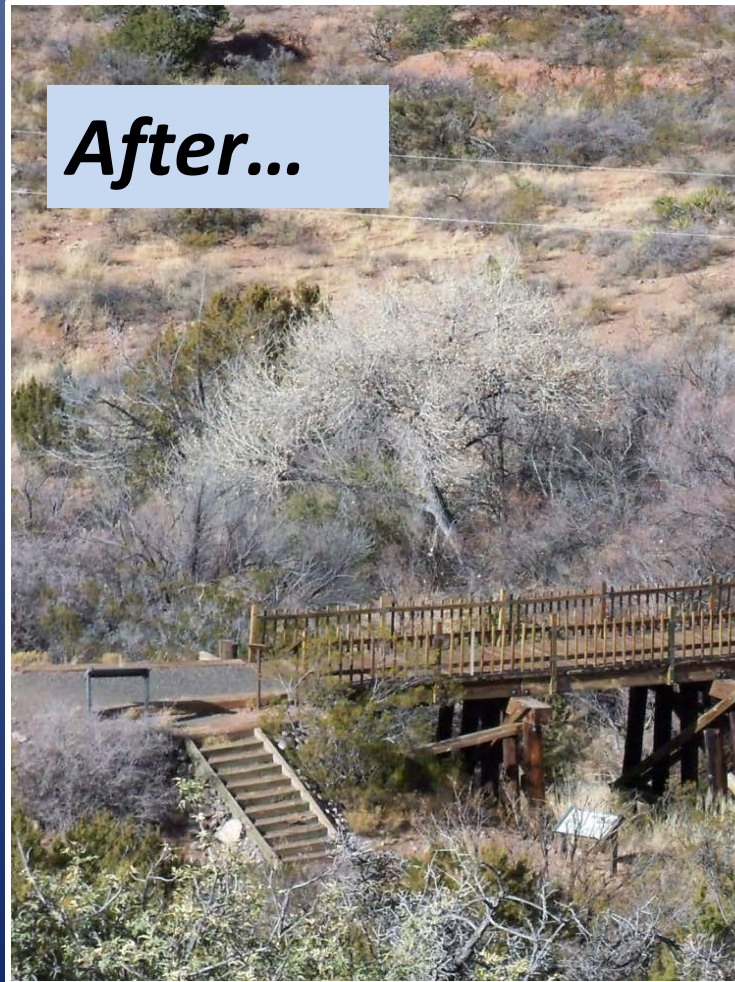
*Before...*





# Salado Canyon Trestle...

*After...*



*During...*





# A&SM → Trails

## “Bridal Veil Falls Trail” 2010





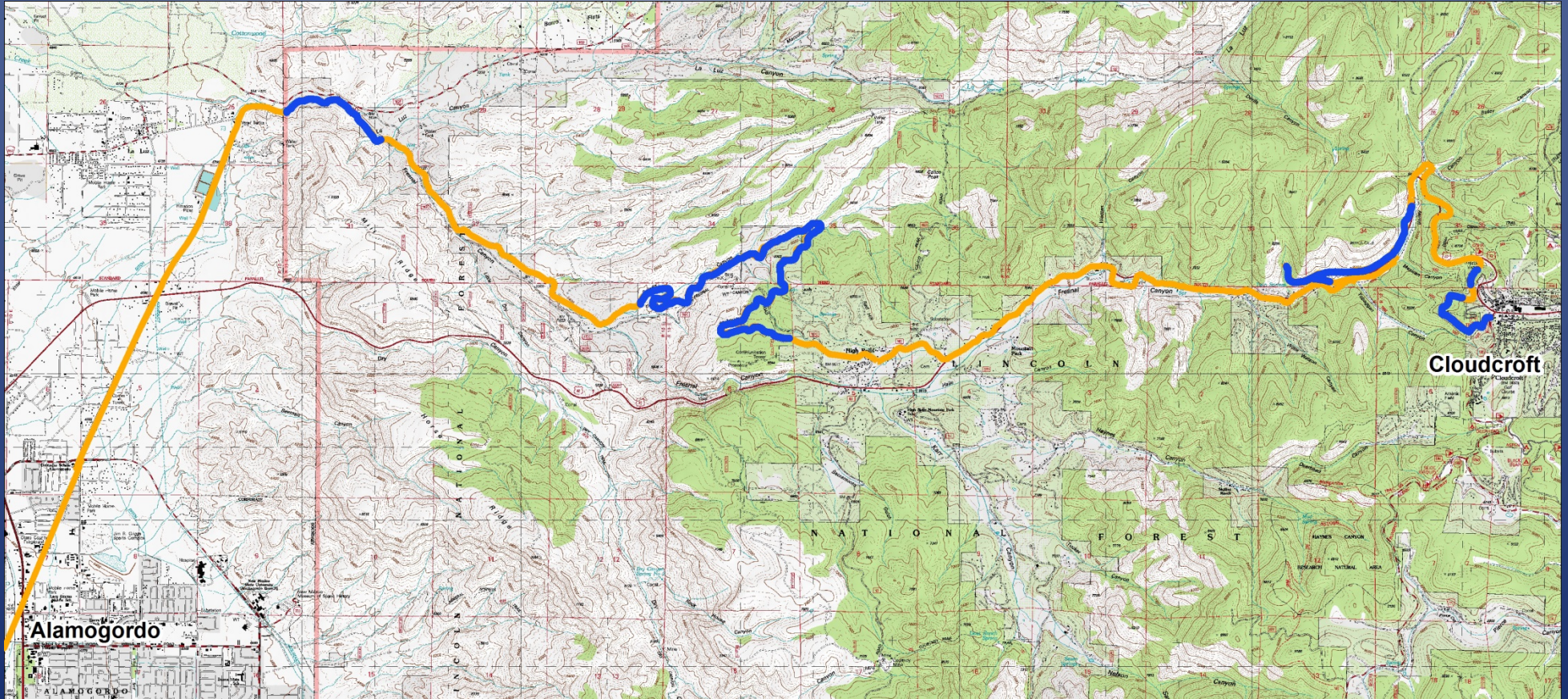
# Bridal Veil Falls...





# A&SM → Trails

## “La Luz Railbed” 2018 (?)





# “La Luz Railbed”

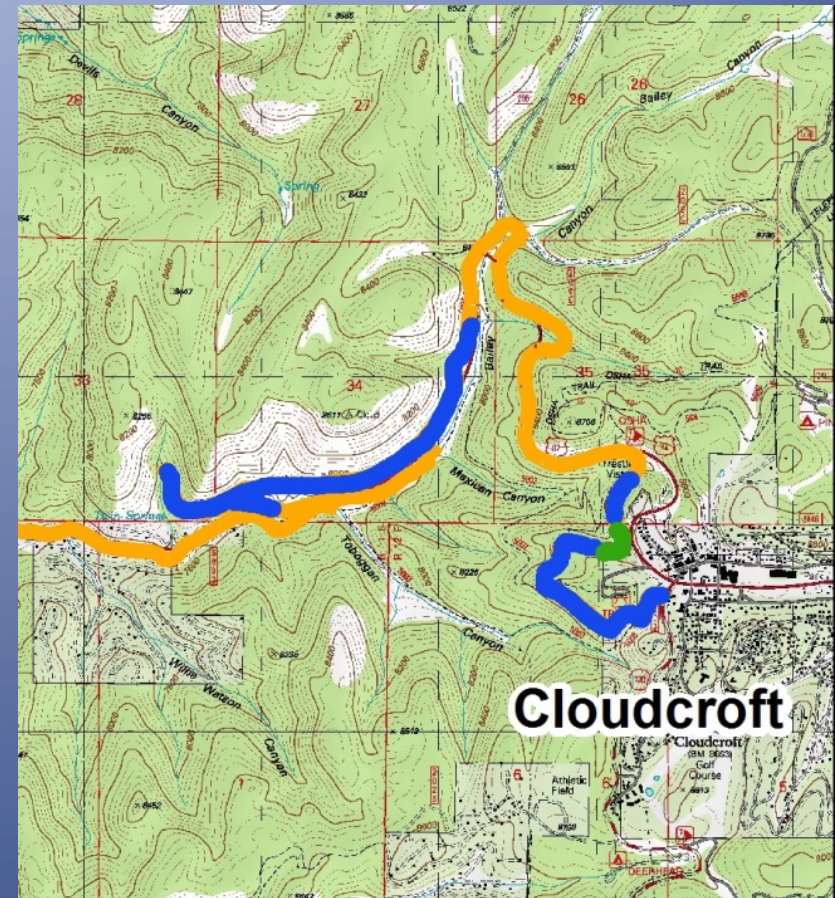
contains two 32 degree curves





# A&SM → Trails

- Green = “Bonnie’s Railbed”
  - Will make a great hike to Mexican Canyon Trestle Overlook
- NMRTA has restored a 46’ trestle within this property.
- NMRTA assisted in gaining placement of the site on the State and National Registers of Historic Places





# A&SM → Trails

## Bonnie's Trestle in 2014





# A&SM → Trails

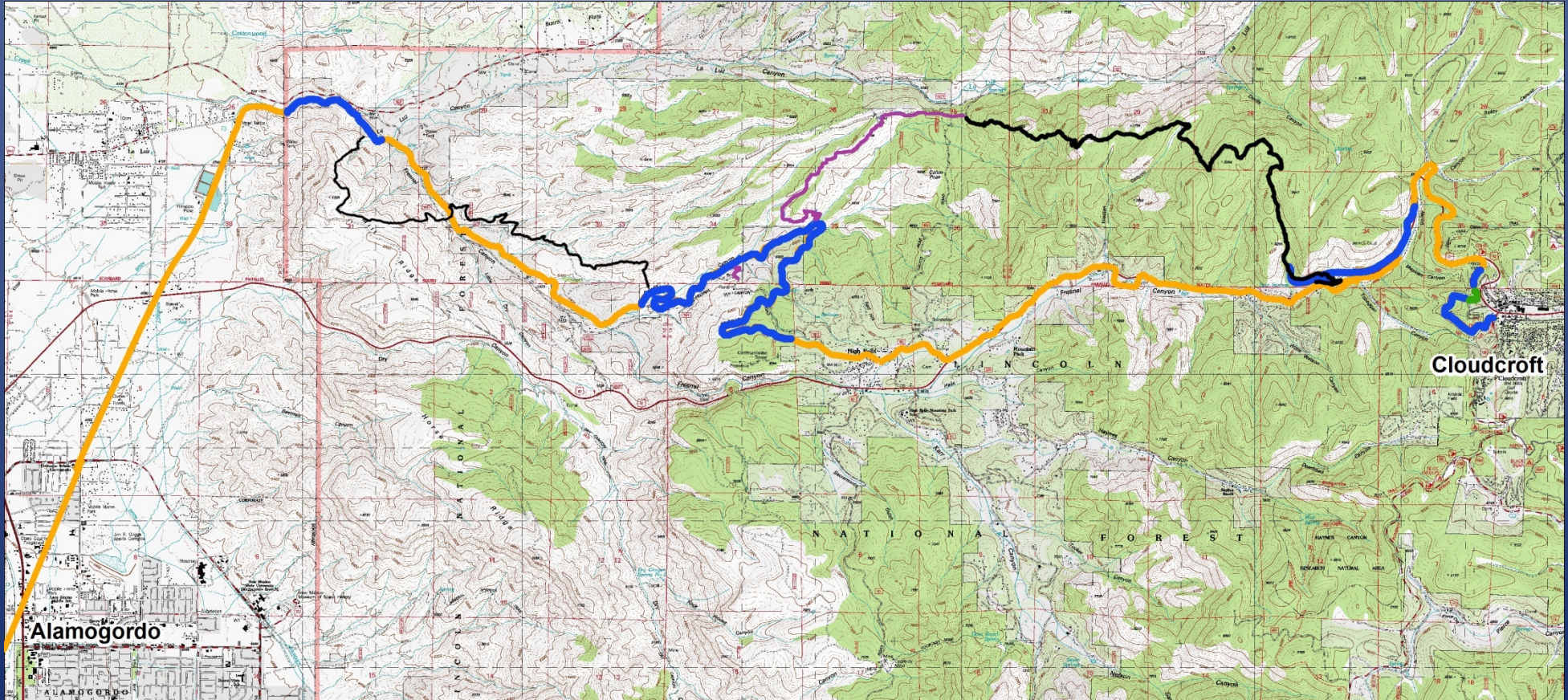
Bonnie's Trestle on August 24, 2019





# A&SM → Trails

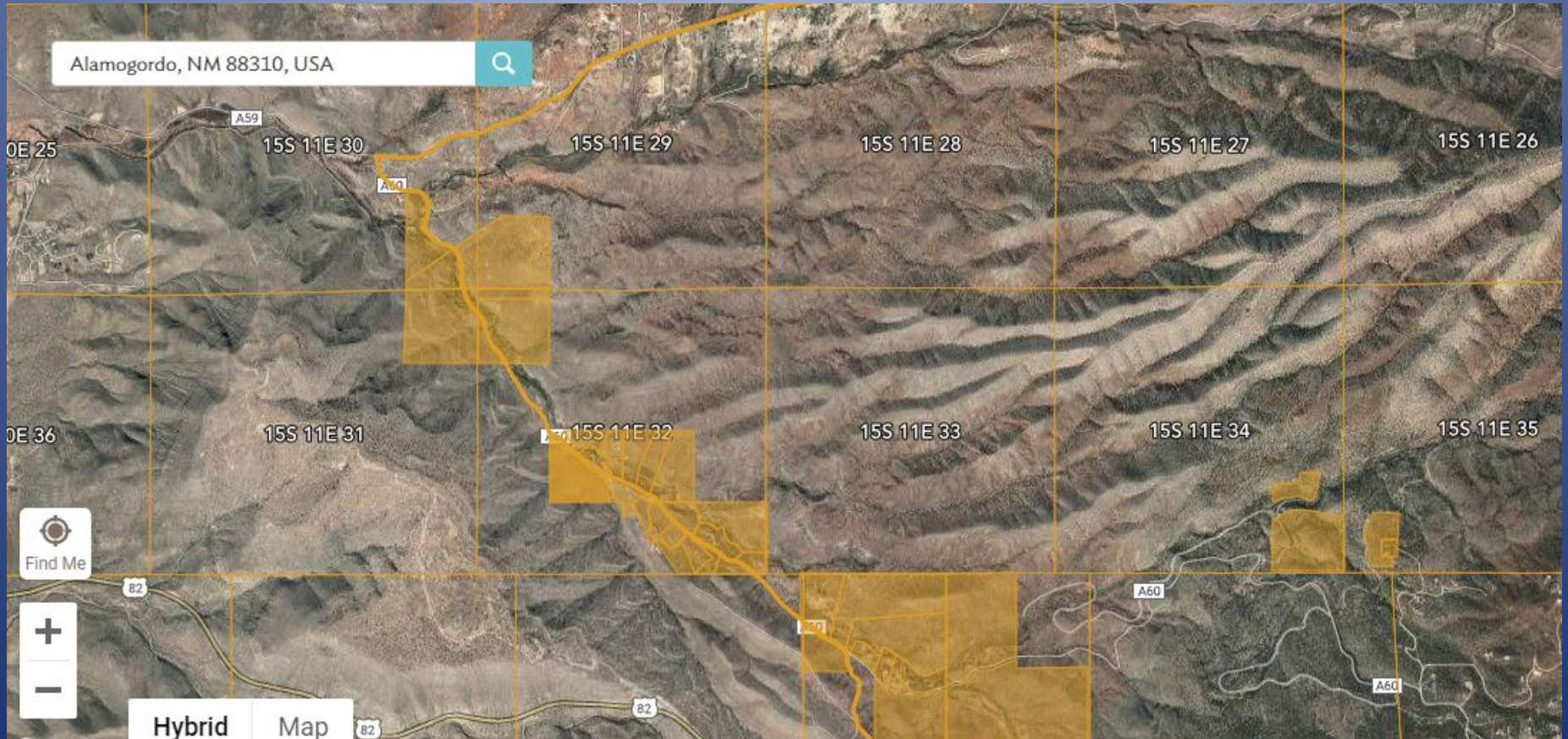
Getting easements across private property is really tough. New trails are on FS land.





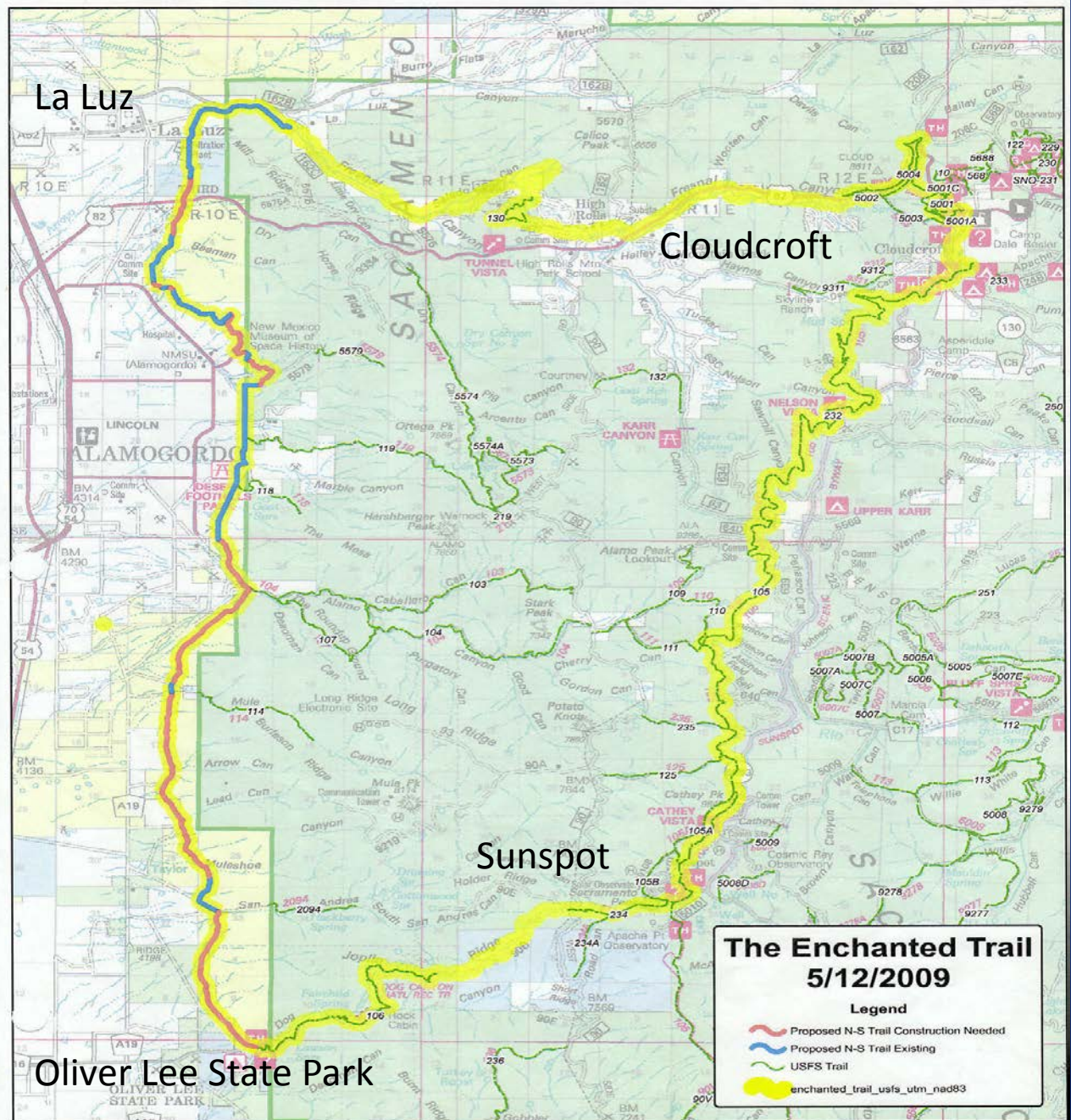
# A&SM → Trails

Acrevalue.com (free) is a huge asset  
in identifying private property lines





# The 'Enchanted Trail'...





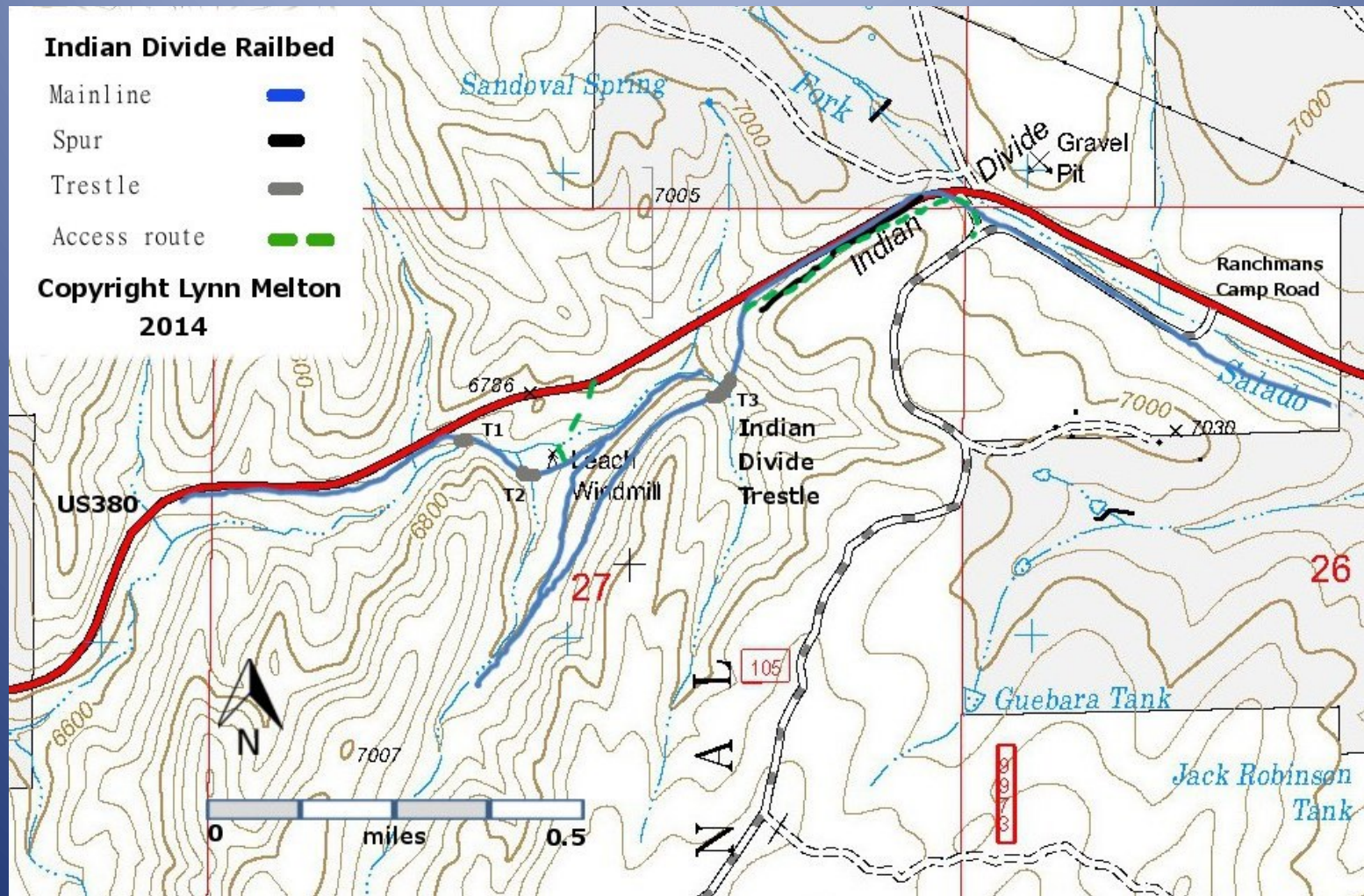
# More Rail/Trail Activities

(Lynn Melton but not NMTA)

- Toboggan Canyon Interpretative Hike
  - Initial part of A&SM
  - Old roads, logging spurs, switchback, wye
- Bailey Canyon Interpretive Hike
  - Initial site for Alamogordo Lumber Company operations
  - Trestles, logging spurs
- Indian Divide Interpretative Hike
  - Capitan Branch of EP&NE (1899)
  - Site of switchback and major trestle (85' high, 290' long)
  - Accessible from US380, on Forest Service land

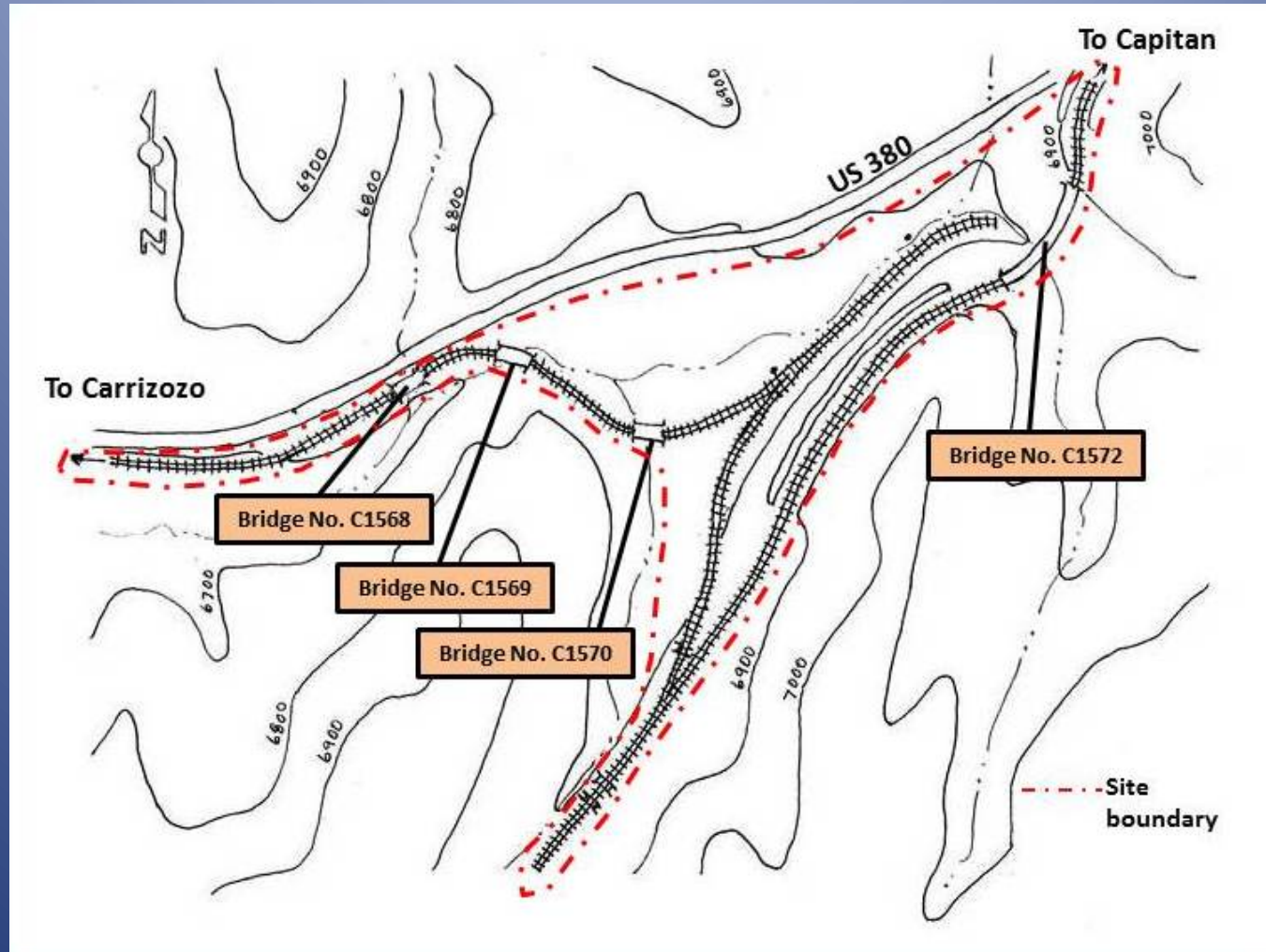


# Indian Divide Interpretive Hike





# Indian Divide Interpretive Hike (and archeology)





# NM Rails-to-Trails Association

- Website: [nmrailstotrails.org](http://nmrailstotrails.org)
- Lynn Melton
- [lynnmelt@gmail.com](mailto:lynnmelt@gmail.com)

