



***Santa Fe Safe Routes to School  
Transportation Alternative Program (TAP) Award  
Progress Report for May – December, 2021 (draft: 3/4/22)***

The City of Santa Fe Parks Department and the Santa Fe Conservation Trust entered into an agreement to develop a Safe Routes to School Program in early May 2021. This progress report details activities, accomplishments, and challenges during the first calendar year of this agreement (May – December, 2021) toward development of a sustainable Safe Routes to School program including education, encouragement, equity, route assessment and recommendations for engineering and enforcement, and evaluation.

## 1. Education

- a. Progress: In 2021 the Santa Fe SRTS program introduced and expanded bicycle and pedestrian education curricula (described at [sfct.org/safe-routes-to-school/safe-routes-to-school-education](https://sfct.org/safe-routes-to-school/safe-routes-to-school-education)) through Summer programming and physical education classes at the following schools, through the services of SRTS Education consultant Chuck Malagodi, Jennifer Wellington of Bike Santa Fe, SRTS Coordinator Tim Rogers, and various volunteers and SFPS staff.

- El Camino Real Academy (Summer and Fall)
- Nina Otero Community School (Summer and Fall)
- Cesar Chavez Elementary School (Fall)
- Wood-Gormley Elementary School (Fall)
- Aspen Community School (Fall)
- Sweeney Elementary School (Fall)

We were fortunate to link with Summer programming (21<sup>st</sup> Century and Hands-On Heritage programs) at ECRA and Nina Otero in June. We were able to follow through with several PE teachers after presentation to PE teachers group in August 2021. New schools were integrated into the program through additional follow-up with PE teachers, administrators, and other interested staff.

- b. Plans: Continue to broaden number of grades and schools receiving bicycle and pedestrian education, expand to full set of focus schools, link all education to encouragement activities. Recruit additional volunteers to assist with bicycle education programming in particular.
- c. Problems: Trying to set up educational programming in schools in times of COVID has been a challenge, especially with changes between virtual and in-school education, and changes in rules around visitors to campus, which made planning difficult and led to frequent cancellation or



*Cesar Chavez E.S. students and staff practice turn signals in Sept. 2021*

postponement of activities. We were eventually able to program activities once schools went consistently in-person.

Bicycle programming is popular but can only be fully conducted at two schools with full fleets. Having a “fleet of wheels” is helpful for Pump It Up classes (for 5<sup>th</sup> grade and up) at any school. Solutions to provide the additional bicycle programming include more schools getting fleets (Milagro M.S. is planning to do so) and/or create a mobile fleet of bicycles with trailer as developed in Albuquerque.

- d. Associated data: Through the support of the Santa Fe SRTS program, staff, consultants, SFPS staff, and volunteers provided 36 sessions in bicycle/pedestrian education to students in 1<sup>st</sup> through 8<sup>th</sup> grade at six schools (listed above) in 2021. Along with seven class outings on foot or bike in the Summer, one walking field trip in the Fall, three bike fix-up sessions, and two helmet distributions, the program directly engaged individual SFPS students 880 times and engaged SFPS staff 56 times. Summaries of this information along with level of effort by SRTS staff, volunteers and stipendees, are provided in the following table, also available at <https://sfct.org/safe-routes-to-school/safe-routes-to-school-education/>

Santa Fe Safe Routes to School							
In-School Activities in 2021							
		hours	students	SFPS staff	SRTS staff	volunteers	
Activities in Summer 2021							
14	Dates with Bicycle Pedestrian activities at SFPS schools	46.5	397	30	18	7	
24	Total Activities, including:	hours of	times	SFPS staff	SRTS staff	volunteer	
15	Sessions in Bicycle Pedestrian Education	engagement	student	days	days	days	
7	Class Outings on Foot or Bicycle	at schools	engaged	engaged	assisting	assisting	
2	Support Activities (Bike Fix Up & Helmet Distribution)						
Activities in Fall 2021							
13	Dates with Bicycle Pedestrian activities at SFPS schools	30.5	483	26	17	13	6
23	Total Activities, including:	hours of	times	SFPS staff	SRTS staff	volunteer	BSF stipendee
19	Sessions in Bicycle Pedestrian Education	engagement	student	days	days	days	days
1	Class Outing on Foot or Bicycle	at schools	engaged	engaged	assisting	assisting	assisting
3	Support Activities (Bike Fix Up & Helmet Distribution)						
TOTALS for 2021							
27	Dates with Bicycle Pedestrian activities at SFPS schools	77	880	56	35	20	6
47	Total Activities, including:	hours of	times	SFPS staff	SRTS staff	volunteer	BSF stipendee
34	Sessions in Bicycle Pedestrian Education	engagement	student	days	days	days	days
8	Class Outings on Foot or Bicycle	at schools	engaged	engaged	assisting	assisting	assisting
5	Support Activities (Bike Fix Up & Helmet Distribution)						

*Santa Fe Safe Routes to School TAP Award, Progress Report for May – December, 2021, p. 3*

The following tables provide more detailed information, including descriptions of individual events and schools involved, on these activities in Summer and Fall 2021:

Santa Fe Safe Routes to School						
Activities in Summer 2021						
		hours	students	SFPS staff	SRTS staff	volunteers
Activities at Nina Otero Community School						
Friday, June 4:	Fix-Up Bike Fleet	3		2	1	1
Tuesday, June 8:	Bicycle/Pedestrian Safety Presentations for four 21st Century Classes	6	69	4	2	
Wed., June 9:	Bicycle Rodeos for four 21st Century Classes	6	69	4	2	1
Thurs., June 10:	Bicycle Skills Training for four 21st Century Classes	6	69	4	2	1
Activities at El Camino Real Academy (ECRA)						
Tue., June 15, am:	Bike/Ped. Safety Presentation for 21st Century Class (Miss Gabi's Class)	1.5	18	2	1	1
Tue., June 15, pm:	Walk to River Trail with Hands-On Heritage (Ms. Ouma's Class)	2	20	2	2	
Wed., June 16:	Bicycle Rodeo for 21st Century Class	1.5	18	2	2	2
Thurs., June 17:	Walk to Future City Park with 21st Century Class	1.5	18	1	2	
Fri., June 18:	Bicycle Skills Training for 21st Century Class	1.5	18	2	1	1
Tue., June 28:	Walk to Future City Park with Hands-On Heritage (Mr. Gorman's Class)	1.5	18	2	1	
Follow-On Activities at Nina Otero Community School						
Tues., June 15	Bicycle Outing to SWAN Park and On-Campus Ride	3.5	20	1		
Thurs., June 17	Bicycle Outing to SWAN Park and On-Campus Ride	3.5	20	1		
Wed., June 23	Bicycle Outing to SWAN Park and On-Campus Ride	3.5	20	1	1	
Thurs., June 24	Bicycle Outing to S Meadows and On-Campus Ride	3.5	20	1	1	
Wed., June 30	Helmet Distribution	2		1		
	<b>24 Total Activities, including:</b>	<b>46.5</b>	<b>397</b>	<b>30</b>	<b>18</b>	<b>7</b>
	<b>15 Sessions in Bicycle Pedestrian Education</b>	<i>hours of</i>	<i>times</i>	<i>times</i>	<i>times</i>	<i>times</i>
	<b>7 Class Outings on Foot or Bicycle</b>	<i>engagement</i>	<i>students</i>	<i>SFPS staff</i>	<i>SRTS staff</i>	<i>volunteer</i>
	<b>2 Support Activities (Bike Fix Up &amp; Helmet Distribution)</b>	<i>at schools</i>	<i>engaged</i>	<i>engaged</i>	<i>assisting</i>	<i>assisting</i>



*Aspen E.S. Sixth-Graders walk the River Trail*

*Santa Fe Safe Routes to School TAP Award, Progress Report for May – December, 2021, p. 4*

Santa Fe Safe Routes to School									
Education Activities in Fall 2021									
		Grade level(s)	students	hours of instr.	SFPS staff	SRTS staff	BSF stipendee	volunteers	Vol hours
<b>Cesar Chavez Elementary School</b>									
Mon., Sept. 27	Bike and Pedestrian Safety presentations	1,2,3,4	102	7	6	2			
Thur., Oct 14	Helmet distribution		1	0.5	1	1			
<b>Nina Otero Community School</b>									
Wed., Sept. 29	Flat tire repair clinic		4	2	5	1	1	3	6
Friday, Dec. 3	Pump it Up	7th + 8th	41	2	1	2		1	2
Thurs., Dec. 9	Jr. HS bike skills	7th+8th	17	2	1	2	1	1	1
Thurs., Dec. 16	Jr HS bike skills	7th +8th	15	2	1	1	1	1	2
<b>El Camino Real Academy (ECRA)</b>									
Sat., Oct. 2	Flat tire repair clinic		7	2	4	1	1	5	10
<b>Wood Gormley Elementary School</b>									
Tues., Oct. 5	Bicycle and Pedestrian Safety Presentations	1,2,3,4	60	3	1	1			
Wed., Oct 6	Bicycle and Pedestrian Safety Presentations	1,2,3,4	62	3	1	1			
Thurs, Oct 14	Bicycle and Pedestrian Safety Presentations	1,2,3,4	61	3	1	1			
<b>Aspen Community School</b>									
Thurs., Oct. 28	Walking Field Trip on River Trail	5	16	2	1	1		1	1
Tues., Nov. 30	Pump It Up	5	25	1	2	1	1	1	3
<b>Sweeney Elementary School</b>									
Thurs., Nov. 11	Pedestrian Safety Presentation	1st + 2nd	72	1	1	2	1		
<b>TOTAL 13 dates / 23 sessions</b>		<b>1st thru 8th</b>	<b>483</b>	<b>30.5</b>	<b>26</b>	<b>17</b>	<b>6</b>	<b>13</b>	<b>25</b>
			students reached	hours of instruction	times SFPS staff	times SRTS staff	times Bike Santa Fe	times volunteer	volunteer hours

These data **do not** capture the continuation of significant additional in-school bicycle programming in the Fall semester by staff at Nina Otero Community School and El Camino Real Academy, the two schools with full fleets of bicycles and striders. This programming includes regular outings on bicycle, on campus and (for Nina Otero) off campus, as after-school programming and within PE classes, including instruction with striders for younger students (K-1). Programming at ECRA was assisted by the SRTS program’s Bike Santa Fe Stipendee, Jennifer Wellington, who helped with 27 ECRA classes on 19 dates. Bike Santa Fe further extended bicycle and pedestrian education to Santa Fe youth under its own agreement with Girls, Inc., through three educational sessions of 3.5 hours each in November.

Critical to the development of educational curricula has been the gathering and purchase of the following materials in Summer and Fall of 2021 under the leadership of SRTS Education consultant Chuck Malagodi:

- Bike Rodeo Equipment loaned or donated by Esperanza Bike Clinic of Albuquerque
- Small plastic cones purchased from Walmart in Santa Fe
- Fleet of over twenty 20” wheels, two small bicycles, tires and tubes for “Pump It Up” instruction, and other materials and supplies donated by local bike shops, Chainbreaker Collective, and individuals
- Purchase of Six Floor Pumps and additional tubes and tire sealant
- 1,000 Glueless Patch Kits with Santa Fe SRTS logo for distribution in Pump It Up classes (first 25 distributed on Nov. 20)
- Audio Speakers for presentations

SFCT started to rent a small storage unit to house these and other promotional materials in September 2021.

## 2. Encouragement

- a. Progress: Bike to School Day on May 5, 2021, took place just as the SRTS contract was going into effect. SRTS staff and consultants joined a Walk and Roll to School Day trip from Cottonwood Village Mobile Home Park to El Camino Real Academy which had about 20 participants, who were joined by 15 more bicyclists arriving from two other locations (Ramirez-Thomas Elementary School and the S. Meadows at Airport Rd. for a total of about 35 participants (roughly 10 adults). Nina Otero Community School also held an event. Also in May the program participated in its first “walk-from-school” field trip when the SRTS Coordinator joined Miss Buehler’s 8<sup>th</sup> Graders on a walk from El Camino Real Academy down the Santa Fe River with outdoors programming by “Cottonwood Gulch” (including setting up a tent and a stove).



*Biking to El Camino Real Academy, May 5, 2021*

Organizing Walk and Bike to School events over the Summer was not practical in part because Summer programming is offered by only certain schools, to students throughout the City rather than just in their service area. The SRTS program did however help take classes on walking and biking trips originating from schools on many occasions. As detailed in table above, Summer programming included three more walks along the Santa Fe River with ECRA students and staff (roughly 20-25 participants in each walk) as well as four bicycle rides with Nina Otero students, accompanied by stipended SFPS staff, the SRTS Coordinator, and Bike Santa Fe volunteers to Tierra Contenta’s Arroyo Chamiso Trail (20-22 participants in each outing).

In the Fall semester, the Santa Fe SRTS Program was able to encourage the following schools to participate in National Walk to School Day on Oct. 6, 2021:

- Nina Otero Community School
- Capital High School
- El Camino Real Academy
- Wood-Gormley Elementary School
- Cesar Chavez Elementary (“Walk at School”)

More information on national Walk to School Day in Santa Fe on Oct. 6 is available at [sfct.org/international-walk-to-school-day-oct-6-2021](https://sfct.org/international-walk-to-school-day-oct-6-2021) and in a Santa Fe New Mexican “Photo Feature by Luis Sánchez Saturno, “[Enjoying the outdoors on Walk to School Day.](#)”



*Walk to School Day, Tierra Contenta Trail, Oct. 6, 2021*

By the end of the Fall semester the following schools had organized additional walking school busses, as well as bike trains, with SFSRTS assistance

- Nina Otero Community School – monthly walk from South Side Library, second Wed. of the month; weekly bike train from SWAN Park every Tuesday

- El Camino Real Academy – Walk & Roll (open to cyclists et al.) from Cottonwood Village Mobile Home Park, on Wednesdays in May, October, and December
- Aspen Community School – started monthly walks in December.

Development of SFSRTS Logo; Production, Purchase, and Distribution of Promotional Materials

- Santa Fe SRTS Vests – Adult (150) and Child (50)
- Santa Fe SRTS Pens (500) with six rotating Bike and Pedestrian Safety Messages
- Santa Fe SRTS water bottles (500), Various Colors
- Santa Fe SRTS patch kits (1,000), distributed with Pump It Up classes as detailed above.
- “Walk to School Day” two-sided “Sandwich-board”-style advertisements (8), distributed to ECRA, Nina Otero, Capital High School, Cesar Chavez Elementary School, South Side Library, and Wood-Gormley Elementary School; retained by the k-8 schools for future events. SRTS Coordinator also assisted with the development of text, maps, and artwork for these plaques as well as for 8.5x11” flyers.

b. Plans: Need to get more schools involved in promotional activities and to increase the number of walking school busses for those that already participate. Need to improve counts of participants in events that take place. Hire a Community Engagement Specialist to assist with SRTS education and encouragement activities (position posted in September 2021 at <https://sfct.org/sfct-is-hiring-2/>).

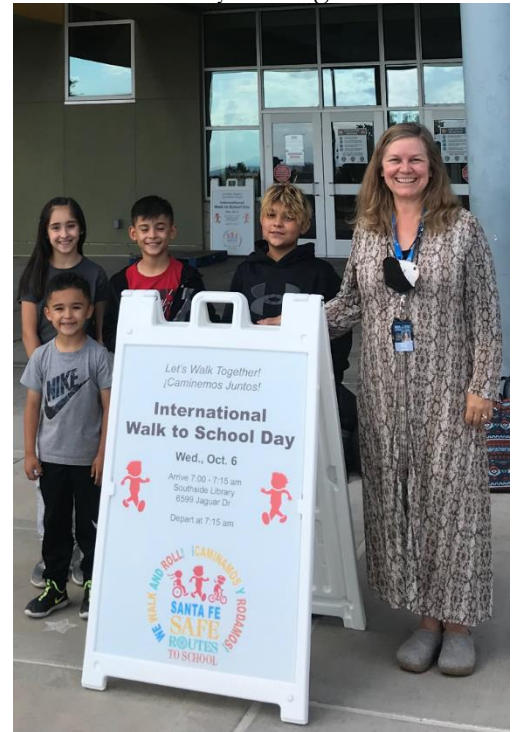
c. Problems: In the Spring of 2021, there was uncertainty about organizing walk and bike to school events as schools were coming out of virtual programming due to COVID-19. Organizing events over the Summer was not practical in part because Summer programming is offered by schools to students throughout the City, rather than just students in their service area.

In October, Cesar Chavez E.S. was looking into having busses drop children off at the South Side Library to join the Nina Otero event, which can be a challenge but one that is not insurmountable based on precedent set by Chaparral E.S. dropping children off at Ragel Park in the past. However, Cesar Chavez E.S. ultimately chose not to participate in Walk to School Day due to an incident of somewhat random violence in the immediate area (Jaguar Dr. & Paseo del Sol) the previous Friday. Instead, the P.E. teacher organized “Walk-at-School” activities on Oct. 6.

In general schools are interested in educational programming but it takes inspired partners to embrace the promotional side of SRTS, which focuses on off-campus activities before the school day begins. Stipends offered to SFPS staff provide a small incentive.

Weekly Tuesday bike trains to Nina Otero received more sparse participation in November and December as the weather became cold and the 7 am start time featured less and less sunlight.

d. Associated data: Data on Walk-to-School events in the Fall are summarized in the following table. Many of the counts are broad estimates based on photos or recollection, and data are not available for events which occurred in a dispersed fashion (e.g. Wood-Gormley).



*Jeri Lyn Salazar and Nina Otero Community School students with one of eight two-sided sandwich-board posters distributed for Walk to School Day.*

We do not have exact counts for Tuesday Bike trains to Nina Otero but it can be stated that for roughly a dozen outings in the Fall, participation ranged from a high of 20 riders to a low of just a handful of adults, once the weather became colder.

Santa Fe Safe Routes to School							
Encouragement Activities in September-December, 2021							
		participants	students	adults	SFPS staff	SRTS staff	other adults
<b>Nina Otero Community School</b>							
Wed., Oct. 6	International Walk to School Day*	70	42	28	6	2	20
Wed., Nov. 10	Walk to School Day*	35	28	7	4	1	2
Wed., Dec. 8	Walk to School Day	15	10	5	4	1	
<i>* data include staff &amp; students from Capital HS and one student from Cesar Chavez ES</i>							
<b>El Camino Real Academy (ECRA)</b>							
Wed., Oct. 6	Walk and Roll to School Day	14	9	5	2	1	2
Wed., Dec. 15	Walking School Bus	5	2	3	2	1	
<b>Wood Gormley Elementary School</b>							
Wed., Oct. 6	International Walk to School Day	n.a.					
<b>Cesar Chavez Elementary School</b>							
Wed., Oct. 6	Walk at School Day	n.a.					
<b>Aspen Community School</b>							
Thurs., Oct. 28	Walking Field Trip on River Trail	19	16	3	1	1	1
Thurs., Dec. 16	Walking School Bus	25	15	10	6	1	3
<b>TOTAL</b>		<b>183</b>	<b>122</b>	<b>61</b>	<b>25</b>	<b>8</b>	<b>28</b>

### 3. Equity

- a. Progress: The Santa Fe SRTS Program addresses equity concerns by focusing on under-served schools in the southwestern part of the City, providing education and encouragement to ECRA, Sweeney, Cesar Chavez, and Nina Otero in particular in the Fall of 2021. The program included Spanish language on sandwich board advertisements and flyers prepared for Walk-to-School events. The program seeks to address inequities relating to residence too-far-away-to-walk by encouraging the development of remote drop-off locations for schools with fewer students who live near the school (e.g. Wood-Gormley).  
The Program worked with the Safe Routes to Parks initiative to identify methods to reach more difficult-to-reach populations, including work with Earthcare’s family and youth group.
- b. Plans: The Santa Fe SRTS program plans to facilitate equitable participation in its planning and programming by offering incentives to members of community-based and student organizations participate in school-area and neighborhood route assessment and planning activities.
- c. Problems: Particularly in the Spring and Summer of 2021, Covid-19 limited our ability to fully interact with community organizations, to offer to accompany Earthcare participants on route assessments, nor to participate in in-person community events.

- d. Associated data: All five of our initial focus schools (Aspen, ECRA, Cesar Chavez, Nina Otero, and Sweeney) are among the 14 SFPS schools that meet criteria for students to automatically qualify for free lunch based on income levels ([per list on SFPS website](#)).

4. **Assessment** of Walking & Bicycling Routes / Development of Engineering and Enforcement Solutions

- a. Progress: The SRTS Coordinator has provided guidance on developing walking and bicycling routes, particularly for newly involved schools such as Wood-Gormley E.S. and Aspen Community School, has personally assessed all walking and biking routes used for bike trains and walking school busses, as well as walking and cycling conditions around schools that have not yet developed promotional activities, and prospects for improvements (see resulting maps below).

As part of the Safe Routes to Parks activity, the SRTS Coordinator shared various forms that can be used to formally assess walking and bicycling conditions at school sites, on neighboring streets, and in surrounding neighborhoods, and collaborated with MPO staff and Earthcare participants in the development of forms to be used in the Safe Routes to Parks activity.

The SRTS Coordinator has reviewed planned improvements in school areas and stayed engaged in planning processes that may positively or adversely affect conditions for walking and bicycling to school, including providing input on various subdivisions, road projects, and trail projects, including:

- Agua Fina Subdivision alongside Las Acequias Park, particularly with respect to unbuilt portion of Acequia Trail (potential Ramirez-Thomas E.S. walk-to-school route), meeting with City Engineer, Subdivision Rep., and MPO
- Agua Fria St. roundabout at entrance to Cottonwood Village (ECRA), review and comments for BPAC
- South Meadows at Agua Fria St., intersection improvements (ECRA), review and comments for BPAC
- Tierra Contenta Trail (Arroyo Chamiso Trail), S. Meadows to Buffalo Grass Rd. (Ortiz M.S./Sweeney E.S.), review and comments for BPAC
- Study Ride with MPO examining future transit center and proposed Tierra Contenta Trail (Arroyo Chamiso Trail) to S. Meadows (Ortiz M.S./Sweeney E.S.).
- Preliminary Engineering Report for River Trail between Cottonwood Village Mobile Home Park and ECRA, review and follow-up communication with MPO, City River Coordinator, and City BPAC Coordinator (also see [www.sfreporter.com/news/2021/11/10/better-walk-to-school/](http://www.sfreporter.com/news/2021/11/10/better-walk-to-school/)).

The SRTS Coordinator communicated with the Principal of Acequia Madre E.S., who had initially reached out to the SRTS program in conjunction with Walk to School Day in October, as well as parents about the promotion of walking and bicycling and traffic conditions around the school, and worked with GIS Consultant to create aerial maps, in preparation to meet in person in January 2022 to discuss and assess conditions.

The Santa Fe MPO organized a demonstration “Pop-Up Protected Bike Lane” which was employed to great benefit for the bike train to Nina Otero Community School on Nov. 30, 2021 (see photo).



*Pop-up protected bike lane demonstration on Paseo del Sol*



- b. Plans: January meeting with partners at Acequia Madre, called by the Principal, will be the first formal SRTS site assessment activity. This will be followed by meetings at our focus schools composed of teams of staff, parents, students, other youth/participants from community groups (e.g. Earthcare, Capital HS HOSA, Santa Fe HS Merit Scholars) using NMSRTS program forms in English and Spanish. GIS consultant will be engaged to create school-area base maps and other mapping as needed
- c. Problems: Focus on implementing education and encouragement activities has limited the SRTS coordinator’s ability to move forward with creating formal assessment teams and activities. SFCT has interviewed candidates for a Community Outreach Specialist to assist in coordinating and implementing activities for education and encouragement.
- d. Associated data: Research toward draft Safe Routes to School Action Plan (January 2022) included following analysis of MPO’s 2019 Bike Master Plan revision

Santa Fe MPO - Bicycle Master Plan Trail Prioritization: Rankings in 2019			
for Top Trail Segments with possible Significance as Safe Routes to School			
Rank*	Category	SCORE*	K-8 School(s) Served: (1) = immediate/direct, (2) = more distant/indirect
1	RIVER TRAIL Connection between Cottonwood Estates and ECRA school	39	(1) El Camino Real Academy
3	ACEQUIA TRAIL: Rufina to San Felipe, with connector and crosswalk at Agua Fria	38	(2) Sweeney E.S., El Camino Real Academy
6	RIVER TRAIL: Caja del Oro Grant Rd. west to AFTC line (w/connection n. to S. Meadows)	35	(1) El Camino Real Academy
7	RIVER TRAIL: San Felipe to E. of S. Meadows (at AFTC line)	35	(1) El Camino Real Academy
8	ACEQUIA TRAIL: Atajo to Cielo Azul development (n. side of Las Acequias Park)	34	(1) Ramirez-Thomas E.S.
9	ACEQUIA TRAIL: Otowi to La Cieneguita via Maclovía and Hmnos Rdgz Parks	34	(1) Salazar E.S.
10	ACEQUIA TRAIL: Rufina to Atajo/Las Acequias Park (via Cielo Azul development)	34	(1) Ramirez-Thomas E.S.
12	MID-TOWN CAMPUS TRAIL: East boundary, from Siringo to near St. M's Dr., w/ connections to LaFarge Library, Milagro M.S. and shopping center	34	(1) Milagro Middle School
14	TIERRA CONTENTA (A.C.) TRAIL: Buffalo Grass to S. Meadows	34	(1) Ortiz M.S., Sweeney E.S.
15	RIVER TRAIL: Siler Rd. to San Ysidro Crossing, with connection to Henry Lynch Rd.	34	(2) El Camino Real Academy
16	RIVER TRAIL: San Ysidro Crossing to Caja del Oro Grant Rd. (pave existing trail)	34	(2) El Camino Real Academy
17	ACEQUIA TRAIL: Connection to Larragoite Park and Agua Fria St.	33	(2) Aspen C.S.
18	CANADA RINCON TRAIL: Calle del Viento (@ Calle Mejía) to Camino Francisca (@ Zoc)	33	(2) Gonzales C.S.
19	NM CENTRAL RAIL TRAIL: Pinon ES to Pueblos del Sol Trails	33	(1) Pinon E.S.
22	ACEQUIA TRAIL: Lopez Lane to Atajo	33	(2) Ramirez-Thomas E.S.
27	TIERRA CONTENTA (A.C.) TRAIL: Along S. Meadows, to Cam.Entrada via School X-in	32	(1) Sweeney E.S., Ortiz M.S.
28	ARROYO CHAPPARAL TRAIL: from Arroyo Chamiso Trail under Zia to Chapparal E.S.	32	(1) Chaparral E.S.
29	Mid-Town Campus Wall Trail: Continue e. side easement trail to n., connect to Lujan S	32	(1) Milagro Middle School

\* - All scores and rankings reflect overall trail considerations - not specific to SRTS

For Aspen C.S., the SRTS Coordinator scoped out a walking route between Griego Park on the River Trail and the school, which he walked with Ms. Nguyen’s Sixth Graders, and mapped the route for use in the promotional flyer at right for the first of Aspen’s monthly Walk-to-School event.



# Walking Thursday!



## Walk to Aspen Community School Thurs., Dec 16, 2021

Meet at Griego Park on the River Trail,  
1605 Paseo de la Conquistadora 7:00 am  
Depart for Aspen by 7:10 am  
¾-mile walk on the River Trail




- Families are welcome to join the walk
- Arrive at Griego Park by foot, bike or car – plenty of  parking!
- Hot Chocolate at school for walkers!!
- Monthly event – every third Thursday in 2022
- Participants earn raffle ticket for a **Grand Prize!**

For purposes of informing planning around Ramirez Thomas E.S. and Nina Otero C.S., the SRTS coordinator assessed routes and created the following planning maps in December 2021:



5. Evaluation

- a. Progress: Evaluation activities in 2021 included gathering data on numbers of participants in education and encouragement activities, as well as data on program activities, as detailed above. The SFSRTS program also took classroom tallies in order to determine patterns in mode of trips to and from school through the use of forms provided by NCSRTS. The SRTS Coordinator and SRTS Education Consultant asked students about trips to school and from school on a given day on 29 occasions at six SFPS schools in Fall 2021. Among 688 students asked over three-quarters reported arriving by private vehicle the morning of the class visit, while roughly 15 percent came by school bus. Under eight percent (7.7%) came under non-motorized power, including 5.7% on foot, 1.5% by bicycle, and 0.6% by skateboard or scooter. This data is kept in a spreadsheet that has been shared with the MPO for development of a more versatile database format.
- b. Plans: Continue conducting class tallies throughout the duration of the SFSRTS activity. Implement parent survey in 2022. Use NCSRTS parent survey as a base for our own tool, with additional questions as proposed by planning partners and including non-anonymous solicitation of interest and contact information for walk- and bike-to-school events.
- c. Problems: Data processing service by the National Center for SRTS ([www.saferoutesinfo.org](http://www.saferoutesinfo.org)) is being discontinued. The MPO will lead the SFSRTS team in development of database tools to help analyze the tally data we gather. The discontinuation of the national program makes the use of the NCSRTS-developed parent survey tool less compelling.
- d. Associated data: A summary of the tally data we have gathered is available at [sfct.org/safe-routes-to-school/safe-routes-to-school-evaluation](http://sfct.org/safe-routes-to-school/safe-routes-to-school-evaluation) along with links to the national tally and survey forms. The following table presents our findings on reported mode of trips to school in Fall 2021:

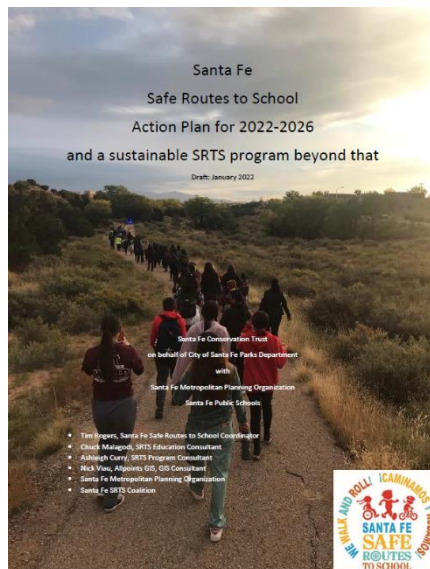
School	Number of Counts	# am arrival	% Walk	% Bike	% Other	% Bus	% Private Vehicle	% Carpool	% Transit
Cesar Chavez	4	178	3.4%	0.0%	0.0%	18.5%	76.4%	1.7%	0.0%
Nina Otero	10	188	1.6%	0.0%	0.5%	19.1%	78.2%	0.5%	0.0%
Wood Gormley*	8	155	11.6%	5.8%	1.9%	5.2%	74.8%	0.6%	0.0%
ECRA	7	115	7.0%	0.9%	0.0%	22.6%	68.7%	0.0%	0.0%
Sweeney	1	72	5.6%	0.0%	0.0%	15.3%	79.2%	0.0%	0.0%
Aspen	1	16	0.0%	0.0%	0.0%	6.3%	93.8%	0.0%	0.0%
Total	29	688	5.7%	1.5%	0.6%	15.3%	76.3%	0.6%	0.0%
Non Motorized: Walk + Bike + Other									
Cesar Chavez	3.4%								
Nina Otero	2.1%								
Wood Gormley*	19.4%	*includes some counts taken on Walk to School Day							
ECRA	7.8%								
Sweeney	5.6%								
Aspen	0.0%								
Total	7.7%								

6. Establish a local SRTS Team/Coalition to guide the development of the Action Plan and implementation strategies identified in the local SRTS Action Plan and program as a whole.
  - a. Progress: Following the model developed in Las Cruces, the SRTS Coordinator assembled members of a “Santa Fe Safe Routes to School Coalition” to help guide program activities and development of an Action Plan. The Coalition includes representation of the MPO, the City, SFPS and individual schools, SFCT, SRTS consultants for education, program development, and geographic information systems, private non-profits, and advocates. Meetings of this coalition were held on-line on Sept. 29, Nov. 1, and Dec. 6, 2021.
  - b. Plans: Continue monthly meetings in 2022 and 2023. Engage coalition members in the development of specific areas of the Action Plan, including strategies for education, encouragement, route assessment and recommendations, equity and evaluation.
  - c. Problems: While virtual meetings by Zoom have some disadvantages in facilitating personal communication to build a team, it does make it easier to convene a group as diverse as this on a monthly basis.
  - d. Associated data: The following individuals participated in at least one of the three Coalition meetings held in 2021:
    - Tim Rogers, SFCT Trails Program Manager / Santa Fe SRTS Coordinator
    - Chuck Malagodi, SRTS Education Consultant
    - Sarah Noss, Executive Director of SFCT
    - McAllister Yeomans, SFCT Operations Manager
    - Erick Aune, Senior Planner, Santa Fe MPO
    - Hannah Burnham, Santa Fe MPO
    - Leah Yngve, Santa Fe MPO
    - Gabe Romero, SFPS Facilities and Operations director
    - Lisa Randall, SFPS Sustainability Program Coordinator
    - Ruby Estrada, SFPS Sustainability Office
    - Jeff Henry, Santa Fe Public Schools / Facilities and Operations

- Nick Viau, Allpoints GIS
- Jennifer Wellington, Bike Santa Fe
- Michelle Ortega, assistant principal at El Camino Real Academy
- Gary Bass, El Camino Real Academy computer lab teacher
- Jeri Lyn Salazar, Nina Otero Community School
- Phil Lucero, Aspen Community School parent, member of City BPAC
- Miguel Acosta, Earthcare
- Elena Kayak, Grant Writer for Three School Districts in NM
- Paloma Sanchez, Chainbreakers Collective
- Shannon Palermo, Railyard Park Conservancy

7. Develop a Santa Fe Safe Routes to School Action Plan.

- Progress: In consultation with SRTS consultants, members of the SFSRTS Coalition, and other partners, the SRTS Coordinator started work toward the development of a Santa Fe Safe Routes to School Action Plan document in Fall 2021.
- Plans: Engage coalition members and other partners in the development of specific areas of the draft Action Plan, including strategies for education, encouragement, route assessment and recommendations, equity and evaluation.
- Create materials for public review and comment electronically and at public events starting in Spring of 2022.
- Problems: This activity has been delayed due to focus on pilot activities in education and encouragement. With a Community Outreach Specialist on board the SRTS Coordinator will be able to focus more on developing planning processes and the Plan document.
- Associated data: A draft document developed by the SRTS Coordinator, as of January 2022, is available at <https://sfct.org/safe-routes-to-school/action-plan>



*Draft Santa Fe SRTS Action Plan,,  
January 2022*