

A dirt trail winds through a dry, grassy landscape. The trail is light brown and shows tire tracks. The surrounding area is covered in dry, yellowish-brown grass and scattered shrubs. In the background, there are dense green trees and a clear blue sky. The overall scene is bright and sunny.

Historic Rails and Trails:

Remembering
New Mexico's Rail History
through Rail Trails

Tim Rogers, Trails Program Manager
Santa Fe Conservation Trust
NM Railroad History Celebration
Sept. 2, 2019

“Creative Trail Alignments”

- Arroyos
- Acequias
- Rivers (and Lakes)
- Rail Lines (Active and Abandoned)
- Utility Lines
- Property Lines
- NOT Roads (per se)

Rail-to-Trail



Historic Rails and Trails



Salida CO

Aug. 30 – Sept. 2, 2019

Rail-with-Trail



Santa Fe NM

Historic Rails and Trails



Aug. 30 – Sept. 2, 2019

Benefits of Rail Trails

- Transportation
- Recreation
- Economic Development
- Preservation
- Restoration
- Interpretation



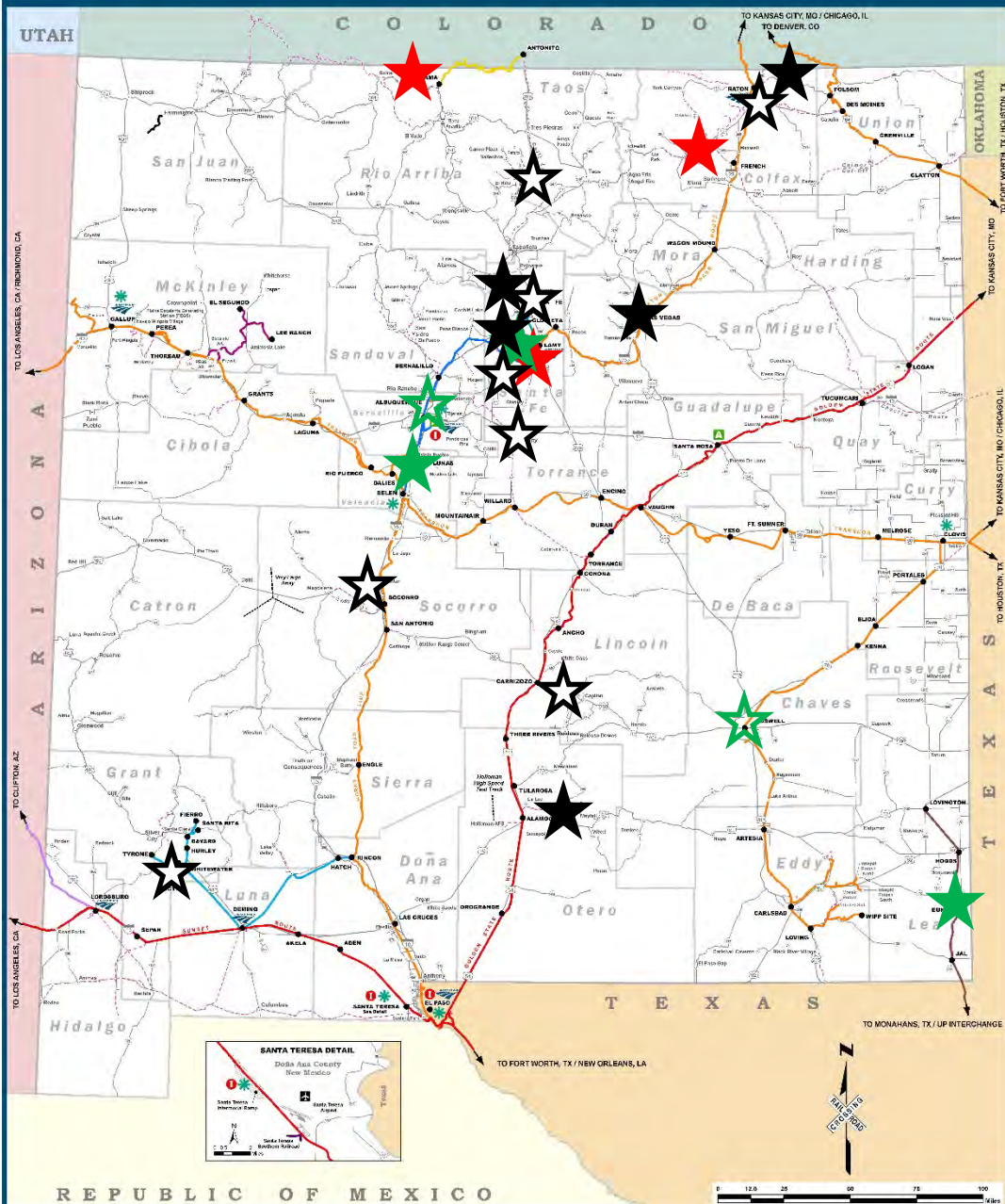
Other Uses of Abandoned Rail Lines in Santa Fe

- Driveways
- Roads
- Other Motorized Use: “Jumps”
- Shooting Gallery

- No Use: Forgotten
- No Use: Gone
- Mis-Interpretation



NEW MEXICO RAILROAD MAP



Historic Rails and Rail Trails in New Mexico

- ★ Preserved/Restored Railway
- ★ Existing Rail-with-Trail
- ★ Proposed Rail-with-Trail
- ★ Existing Rail-to-Trail
- ★ Proposed Rail-to-Trail

Historic Rails and Trails



Aug. 30 – Sept. 2, 2019



Cloud-Climbing Rail Trail, Cloudcroft NM

Cloud-Climbing Rail Trail
 A MONUMENT TO THE HISTORY OF RAILROADING
SALADO CANYON TRESTLE
 Alamogordo & Sacramento Mountain Railroad

Salado Canyon Trestle, 1898
 Photo by Susan A. Roberts, Boston, MA

■ The Salado Canyon Trestle is 98 feet long and about 20 feet high.

■ The Salado Canyon section of the A&SMRR line is notable in the fact that the track here makes a double horseshoe. Under some circumstances one could view the engine going east while sitting in the caboose going west or see trains on three different segments at once.

■ A&SMRR "is among the legendary railroads of the west" and "one of the most spectacular among western railroads," according to David E. Myrick in his book "New Mexico's Railroads, A Historic Survey" University of New Mexico Press (1993).

■ Construction on the Alamogordo & Sacramento Railroad started in Alamogordo in June of 1898.

■ Reached Toboggan in November, 1898.

■ Reached Cloudcroft in October, 1899.

■ A&SMRR was the highest altitude standard gauge railroad in the world at the turn of the 20th century.



Salado Canyon Trestle 2002 (View looking to the East)



Salado Canyon Trestle 2002 (Looking West)

■ There are 58 pile or frame trestles, averaging 120 feet in length, on the A&SMRR.



Salado Canyon Trestle 2002 (Looking West)

This page was prepared by the Alamogordo & Sacramento Mountain Railroad Association. The Alamogordo & Sacramento Mountain Railroad is a historical railroad. The U.S. Forest Service, National System of Public Lands, and the Alamogordo & Sacramento Mountain Railroad are the property of the U.S. Forest Service.

Historic Rails and Trails in Southern New Mexico

- Lynn Melton, Volunteer, New Mexico Rails-to-Trails Association
- Mark Gutzman, Historic Archaeologist, Lincoln National Forest



Historic Rails and Trails in Northern New Mexico

- Tim Rogers, Trails Program Manager,
Santa Fe Conservation Trust
- Emma Green, Healthy Kids / Colfax
County



Background: Selected Trail Planning Activities for Santa Fe

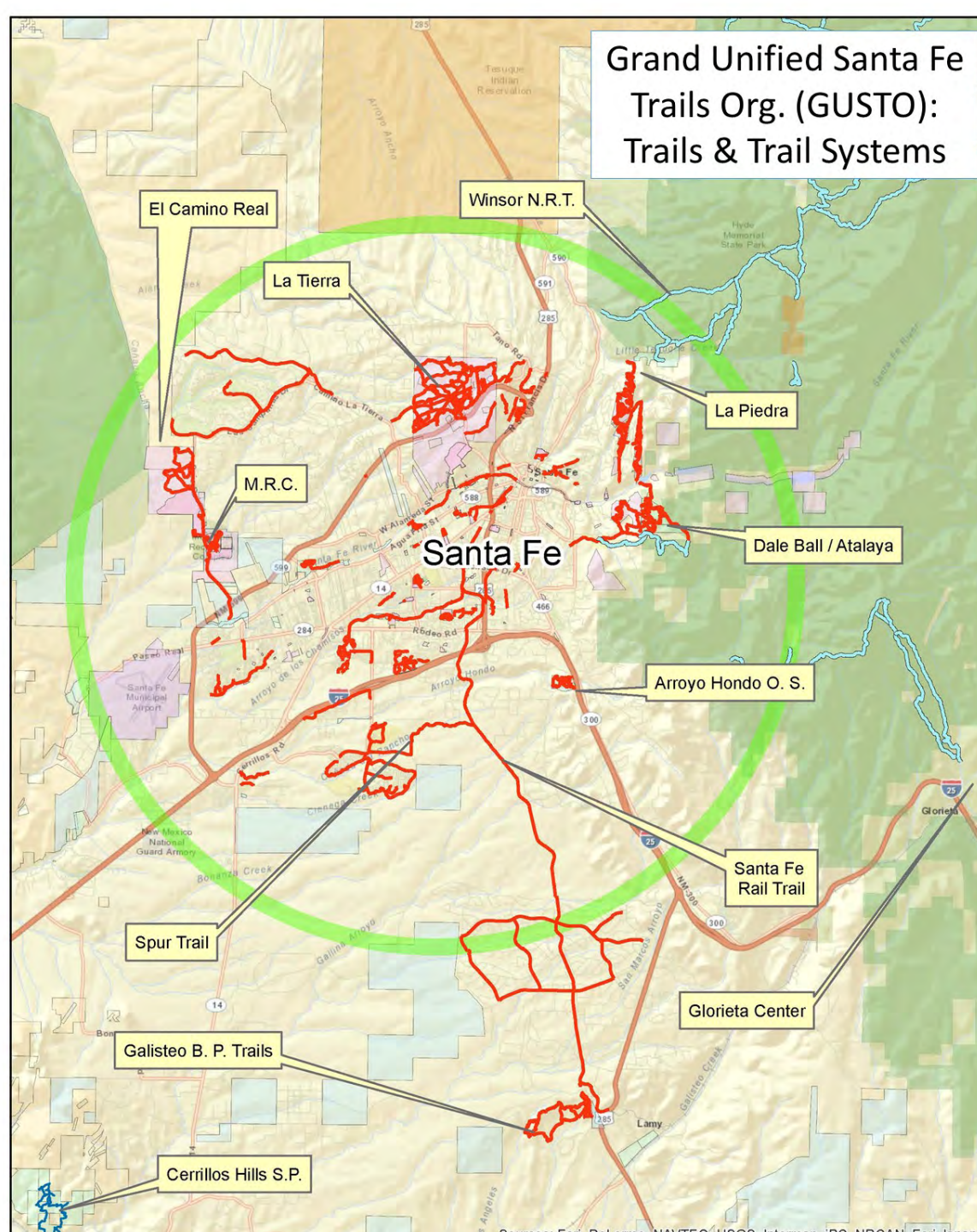
- Metropolitan Bicycle Master Plan (adopted 2012)
- Re-Mike (Summer 2012)
- GUSTO (Grand Unified Santa Fe Trails Org.) (2014- pres.)



Grand Unified Santa Fe Trails Org. (GUSTO): Trails & Trail Systems

“Specific objectives under GUSTO include... development of trails following historic routes to the extent practicable as non-motorized retracement trails.”

- GUSTO Partnership Agreement



Historic Rails and Trails



Aug. 30 – Sept. 2, 2019

Santa Fe's National Historic Trails

- El Camino Real
- Old Spanish Trail
- Santa Fe Trail

Santa Fe's National Historic Route

- Route 66 (1926-37)



Quiz Yourself

History

When the railroad was built, trains replaced the covered wagon and the Santa Fe Trail lost its importance. When roads were built for automobiles, the trains lost their importance.

- 1 In 1879, the first train entered New Mexico after it traveled from Topeka, Kansas and on through Colorado. What was the name of the train, and what town was it near when it enter New Mexico?
- 2 Movie stars rode the Super Chief, a luxury train that ran weekly between Chicago and Los Angeles. Where in New Mexico did the Super Chief encourage movie stars to stop and stay for awhile?
- 3 What three railroads served Santa Fe?
- 4 The Lamy spur line was built to get freight and passengers from Lamy to Santa Fe. The building of the spur line in 1880 was paid for by whom?

- 3 Atchison, Topeka and Santa Fe; Denver and Rio Grande; and the New Mexico Central.

Historic Rails and Trails

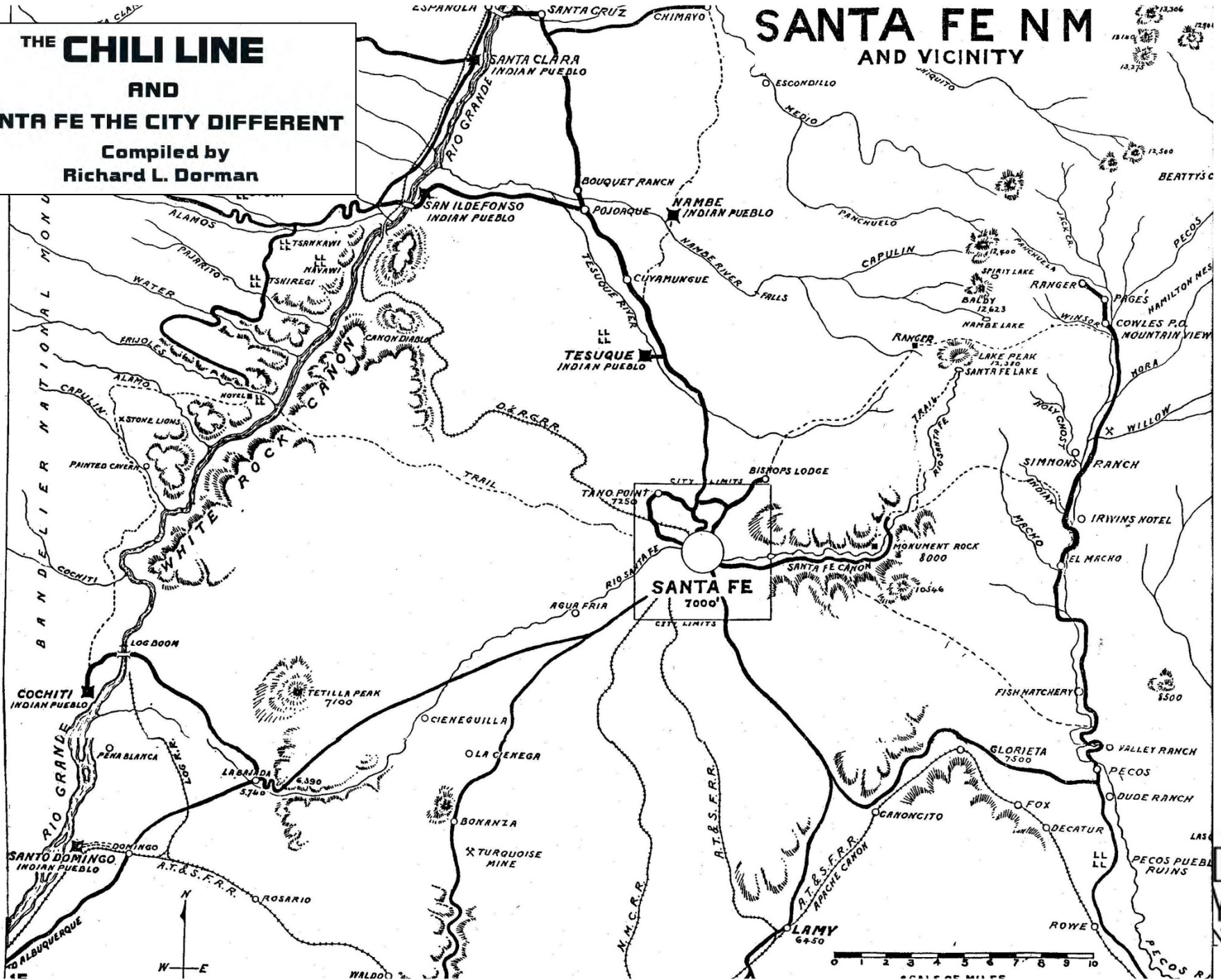


Aug. 30 – Sept. 2, 2019

THE CHILI LINE AND SANTA FE THE CITY DIFFERENT

Compiled by
Richard L. Dorman

SANTA FE NM AND VICINITY



Abandoned Rail Lines in and around Santa Fe

- Denver and Rio Grande Western, Santa Fe Branch (“Chili Line”)
- New Mexico Central Railroad (“Pinto Line”)
- Bruns General Hospital Line
- Abandoned Segments of the AT&SF/Santa Fe Southern RR (a/k/a “Lamy Spur”)



Existing Rail Trails in Santa Fe

- Santa Fe Rail Trail (Rail-with-Trail) (AT&SF)
- Railyard Park Railway Gardens Trail (NMCRR)
- Acequia Trail (& Underpass) (NMCRR)
- Acequia Trail Spur to Flagman Way (NMCRR)
- Rancho Viejo, College Heights Trail (NMCRR)
- Rancho Viejo, District Trail (NMCRR)
- Camino Real Trail / Chili Line Section (D&RG)
- Chili Line along Rio Grande in SFNF (D&RG)

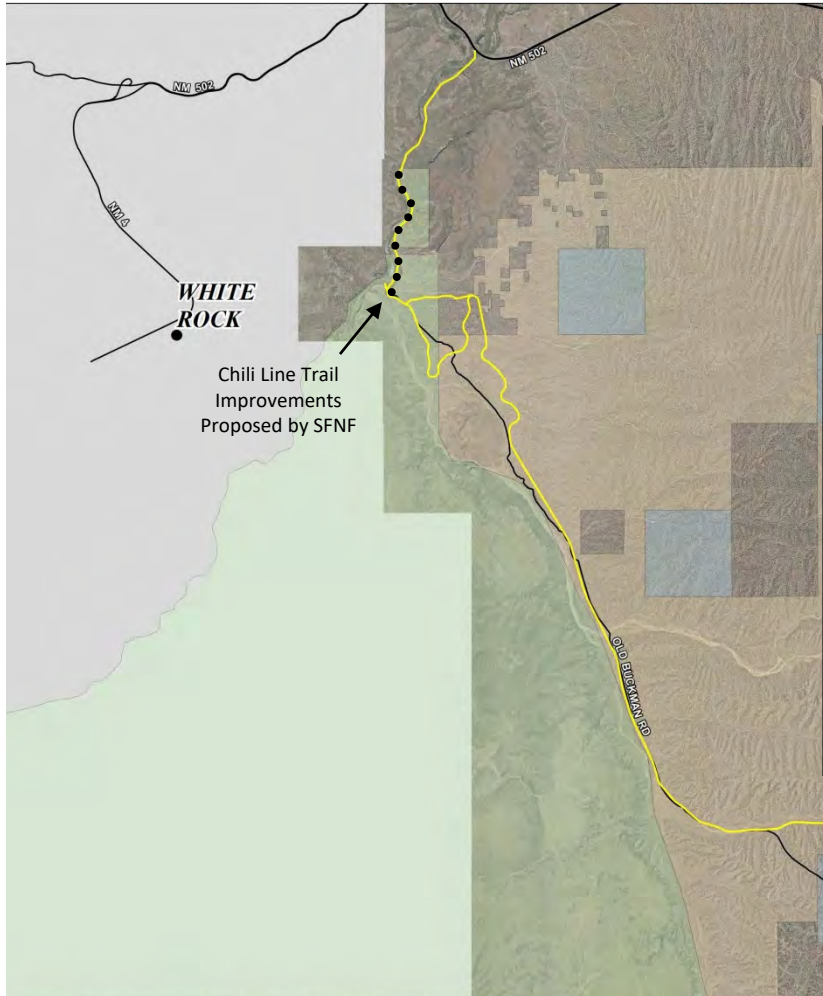
- Informal Rail Trails
 - Bruns General Hospital Line
 - Chili Line near La Tierra Trails



“The Chili Line:” Denver & Rio Grande Western RR: Narrow Gauge, Active 1887-1941



Photo courtesy of
<http://ngchililine.org>



**WHITE
ROCK**

Chili Line Trail
Improvements
Proposed by SFNF

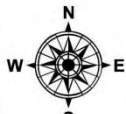
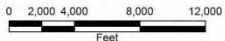
Abandoned Railroads near Santa Fe

Legend

- Abandoned Railroads
- New Mexico Central Railway
- Other Abandoned Railways
- Active RR Line
- City Limits
- Major Roads
- Towns and City

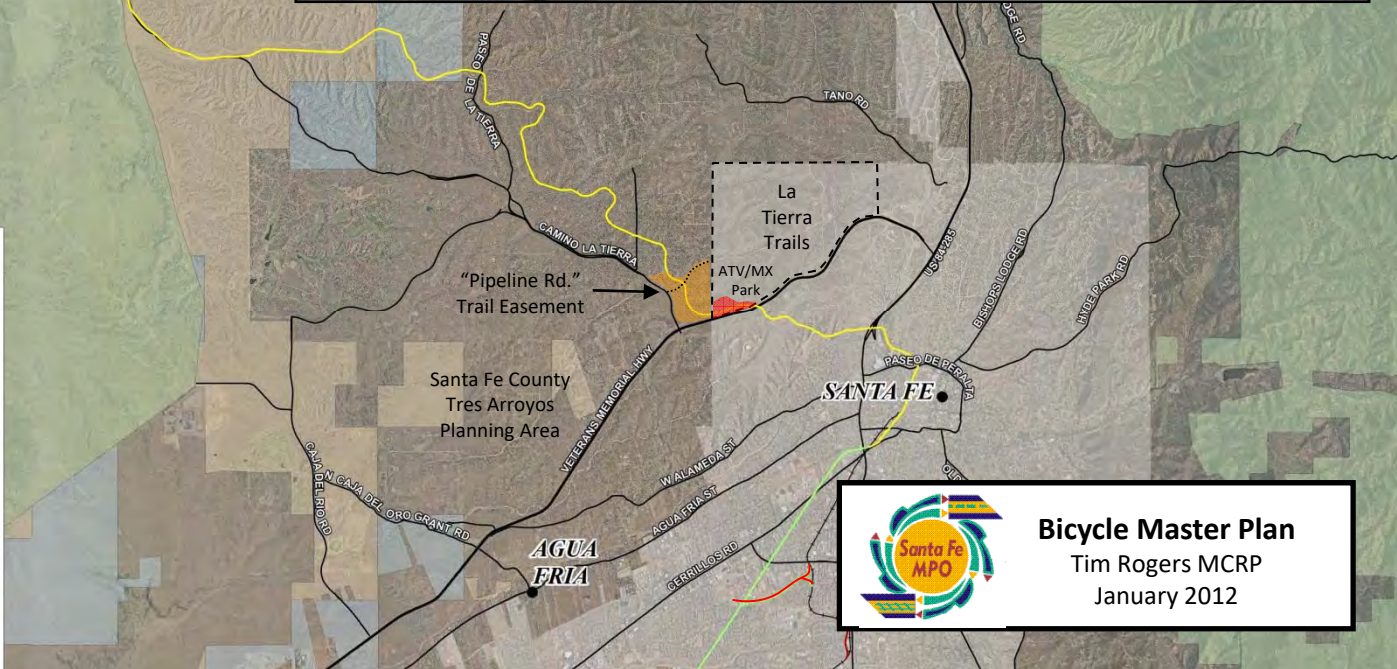
1:48,000

1 inch = 4,000 feet



Aerial Photography from 2008

This information is for reference only. The City of Santa Fe assumes no liability for errors associated with the use of these data. Users are solely responsible for confirming data accuracy when necessary.



Bicycle Master Plan
Tim Rogers MCRP
January 2012



A RAILROAD NICKNAMED FOR ITS FREIGHT

THE CHILI LINE WAS THE SANTA FE BRANCH OF THE DENVER AND RIO GRANDE WESTERN RAILROAD. IT RAN FROM 1880 UNTIL 1941 ON A THREE FOOT NARROW GAUGE TRACK FROM ANTONITO, COLORADO TO SANTA FE, NEW MEXICO.

CARGO INCLUDED LIVESTOCK, WOOL, FRUIT, CHILI, BEANS, SUGAR, FLOUR, MANUFACTURED GOODS AND TIMBER. REMNANTS OF THE RAILROAD GRADE ARE VISIBLE ALONG BUCKMAN RD. NEAR ALAMO ARROYO, DIABLO CANYON AND THE RIO GRANDE NEAR TOWN.

PLEASE PRESERVE AND RESPECT THIS HISTORIC REMNANT AND STAY OFF OF THE RAILROAD GRADE.

Chili Line Railbed: Well-Used Informal Trail
North of Frijoles Arroyo, just west of La Tierra Trails



El Camino Real

Chili Line Reroute (3/24/16)

Legend

- Alternate Alignment
- Chili Line
- Original West Alignment
- Trailhead



Plan for El Camino Real Trail

(Courtesy of Scott Belonger,
Loris and Associates)

Historic Rails and Trails



Aug. 30 – Sept. 2, 2019

Chili Line Railbed: Now part of Camino Real Trail, near Buckman Rd.





Chili Line Railbed in La Tierra Trails

Historic Rails and Trails



Aug. 30 - Sept. 2, 2019



View of Chili Line Looking North, by M Wagoner

Historic Rails and Trails



Aug. 30 – Sept. 2, 2019



View of La Tierra Trails with Chili Line, by M Wagoner

Historic Rails and Trails
2nd Annual
NM RAILROAD HISTORY
CELEBRATION
Aug. 30 – Sept. 2, 2019

The logo features a black and white illustration of a steam locomotive on the left, emitting a plume of smoke. To the right of the locomotive, the text '2nd Annual' is positioned above the large, bold letters 'NM RAILROAD HISTORY'. Below this, the word 'CELEBRATION' is written in a smaller, spaced-out font. At the bottom, the dates 'Aug. 30 – Sept. 2, 2019' are displayed.

La Tierra Trails Chili Line

see, walk, ride the Chili Line!

Visit historic RR site then hike or bike more Chili Line!

Hike & Bike Ride, w / option to retrace Chili Line back to town

Sun., Sept. 1, 2019

meet at 4:30 pm at La Tierra Trails' Buckman

Motocross Track
La Mirada St., off NM599

Relief Route (near La T Junction 22)

This activity follows Rail Trail Discussion Panel at El Museo, 1-3 pm

Supported by City of Santa Fe and Santa Fe Conservation Trust
For more info., contact Tim Rogers at (505) 989-7019 or tim@sfct.org

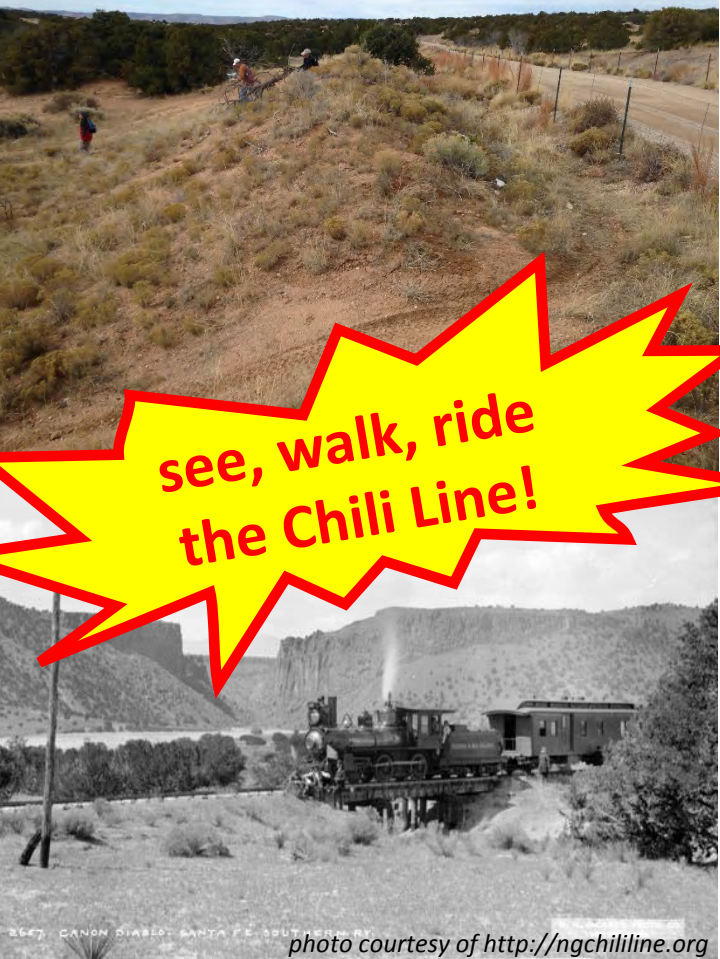


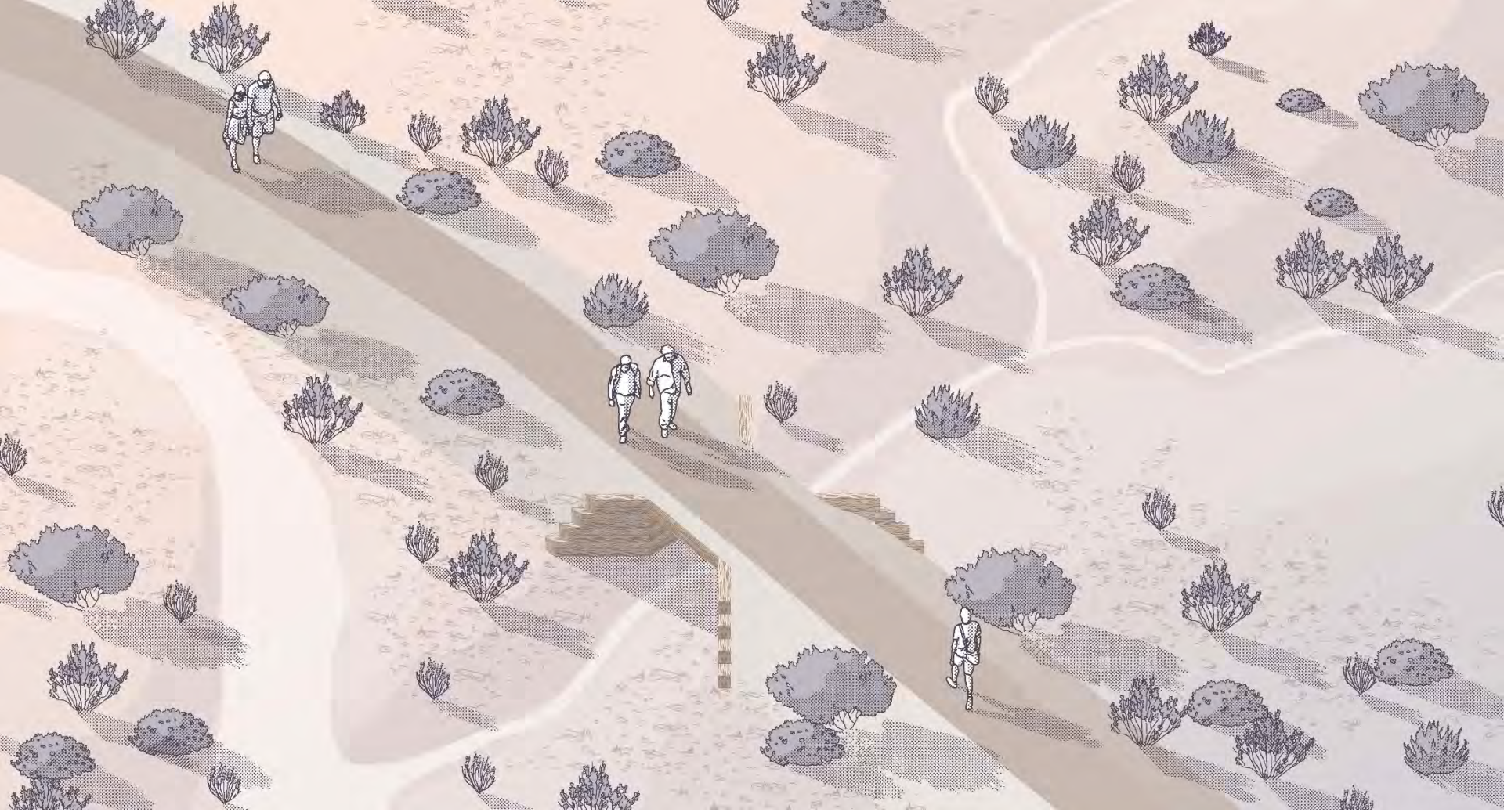
photo courtesy of <http://ngchilline.org>



SANTA FE CONSERVATION TRUST



nmrailroadhistory.com



View of a future La Tierra Trails / Chili Line Trail, by M Wagoner

Historic Rails and Trails



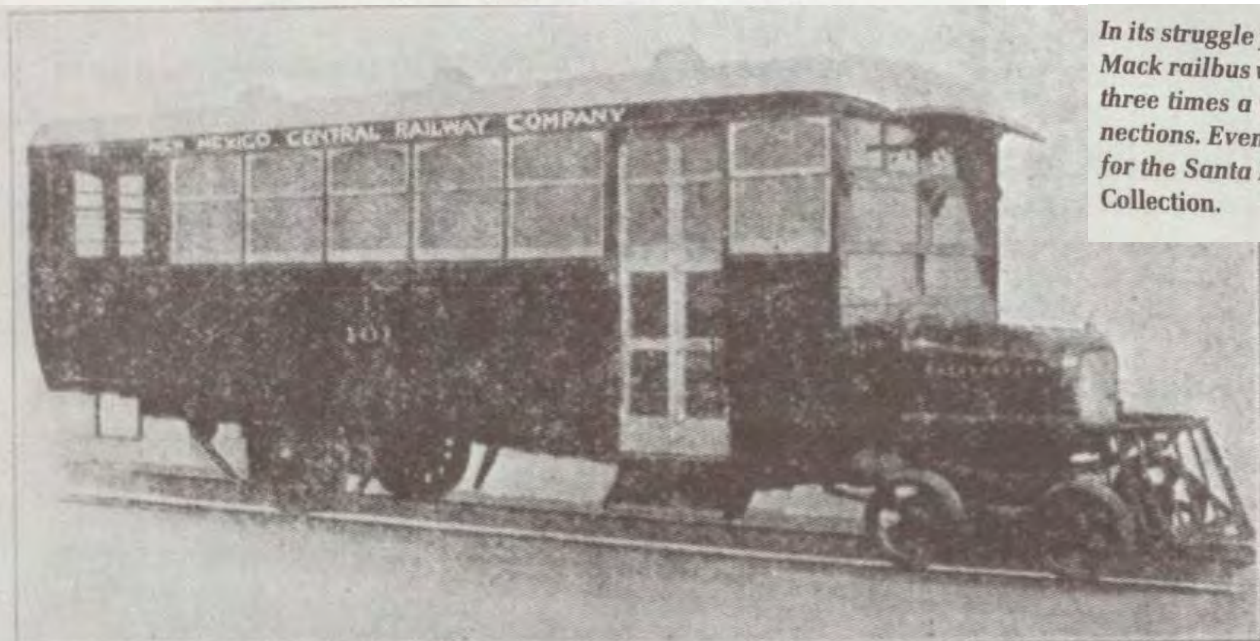
Aug. 30 – Sept. 2, 2019



The New Mexico Central had a mixture of second-hand locomotives. This one, built for the El Paso and Northeastern by Baldwin, was acquired in 1919. The curved cab window confirms prior EP&NE ownership. Photograph H. J. Maxwell Collection.

New Mexico Central Railroad 1903-1926

Photos and captions from
Myrick, David F. *New Mexico's Railroads:
An Historical Survey*. Colorado Railroad
Historical Foundation, Inc., 1970 (revised
1990)



In its struggle for survival, the New Mexico Central purchased the Mack railbus which, effective June 1, 1924, provided faster service three times a week from Santa Fe to Torrance with Chicago connections. Even with this improvement, the local line was no match for the Santa Fe's fine trains from nearby Lamy. Fred M. Springer Collection.

Type of Gasoline Cars used between Torrance and Santa Fe, New Mexico

Historic Rails and Trails



Aug. 30 – Sept. 2, 2019



Excerpted from:

RAILROAD MAP
 OF THE STATE OF
NEW MEXICO
 PREPARED UNDER THE DIRECTION OF
 STATE CORPORATION COMMISSION

Hugh H. Williams Chairman
 J. M. Luna Commissioner
 Basilio Montoya Commissioner

State Fe. N. M. Oct. 1924.



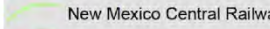
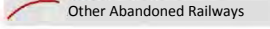
Historic Rails and Trails

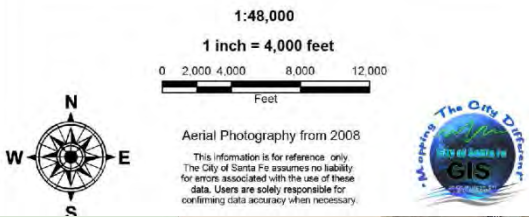


Aug. 30 – Sept. 2, 2019

Abandoned Railroads near Santa Fe

Legend

- Abandoned Railroads**
-  D&RGW Chili Line Railway
 -  New Mexico Central Railway
 -  Other Abandoned Railroads
- Active RR Lines
City Limits
Major Roads
Towns and City



New Mexico Central Railroad: Standard Gauge

Active 1903-1926*
(Santa Fe – Kennedy Section Abandoned in 1929)

*Operated as Santa Fe Central RR, 1903-1908

Railyard Pk / Railway Grdns Trl

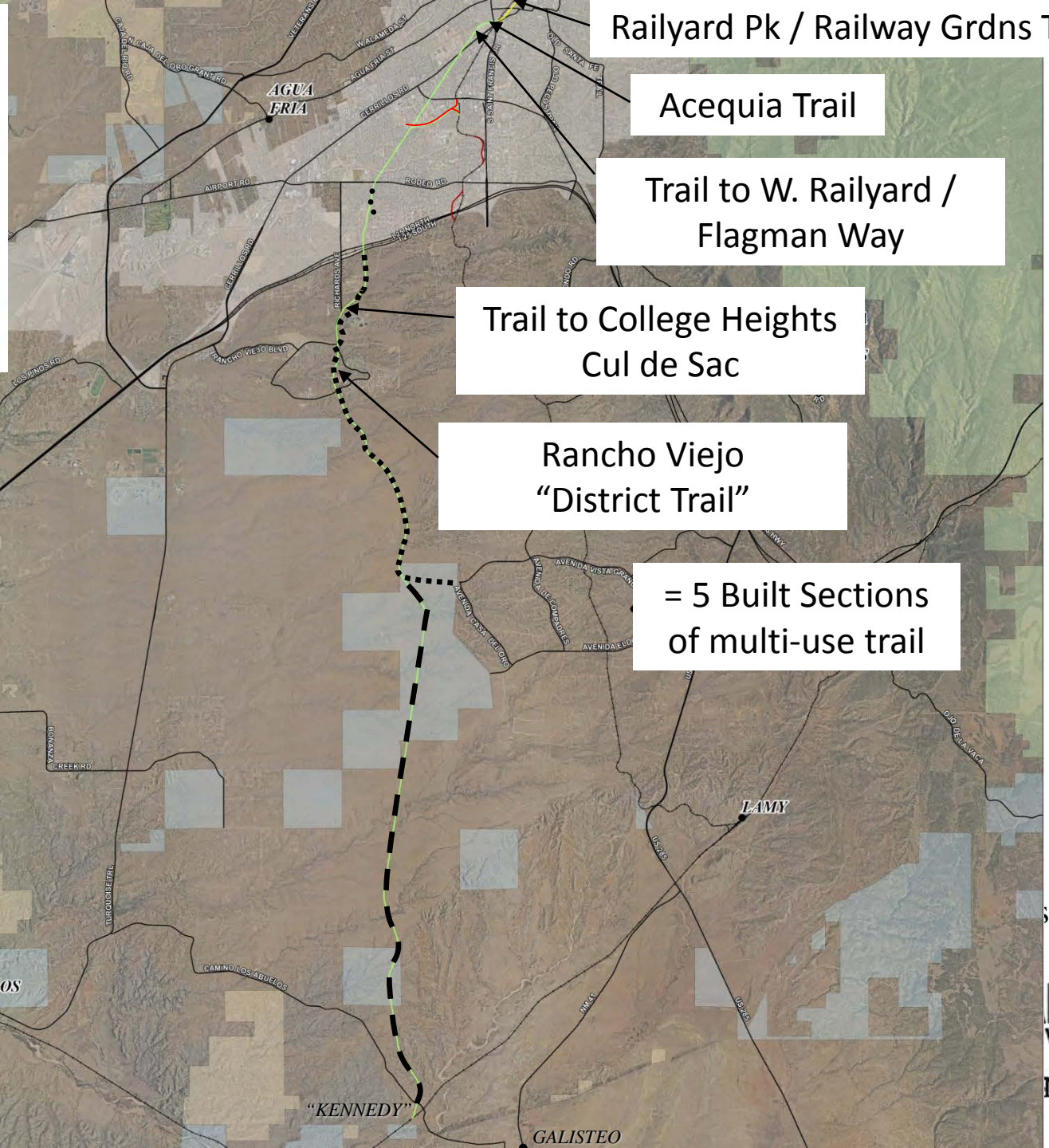
Acequia Trail

Trail to W. Railyard / Flagman Way

Trail to College Heights Cul de Sac

Rancho Viejo "District Trail"

= 5 Built Sections of multi-use trail



DYNDEN



**City of Santa Fe's "Acequia Trail":
N.M. Central R.R.**



Bicycle Master Plan
Tim Rogers MCRP
January 2012



N.M. Central R.R.

Rancho Viejo's "District Trail"



Bicycle Master Plan
Tim Rogers MCRP
January 2012

A

At Rancho Viejo, there exists a pathway through time. Over the millennia, these pasture plains have been tracked by the Anasazi early turquoise miners, sheepherder, Native American warriors, Spanish Conquistadors, missionaries, homesteaders and traders, as well as U. S. and Mexican armies.

Enduring freezing cold and dry heat, these hearty souls traveled across the "Old Ranch" in carts and wagons, on horseback and on foot. They brought with them wild and domestic animals such as sheep, cattle and horses of the royal herd that grazed upon the fertile grasses. This land was traded, granted, sold and bought many times over. At times, it provided a place to build shelter. Other times, it was a reward or an asset.



The Earliest Signs of Man

Hunters and gatherers arrived here as early as 5500 BC, building campsites and pueblos, but remains of their settlements date back only to the pueblos of 1300 AD. One pueblo, abandoned around 1350, had a block of 300 fresco decorated rooms and a kiva for worship.

Vargas and the Conquistadors

By the 1500's Spanish Conquistadors in full armor crossed the land on their way to find gold and silver in the hills. In 1692, Don Diego de Vargas with his soldiers armed and ready for battle traveled through Rancho Viejo seeking to reconquer the Spanish province following the Pueblo Revolt in 1680. He returned the following year to recolonize, trekking through this land with 800 families, 900 head of sheep, 2,000 horses and 1,000 mules.



Rail Becomes King

Eventually, the railroad came bringing homesteaders who were hungry for land and a new life. Beginning in 1902, a railroad branch line was laid from Santa Fe through Rancho Viejo, and is believed to follow an alignment of an old road to Galisteo. Originally named the Santa Fe,

Albuquerque and Pacific Railroad Company, but later known as the Santa Fe Central, the railroad hauled pinto beans and coal rather than carloads of gold, silver and livestock as envisioned by its promoters. With few passengers and limited freight, the railroad succumbed to bankruptcy and was abandoned in 1929, leaving only its roadbed visible from this trailhead.

Hollywood

More recently, it has been rumored that Hollywood cowboys followed the paths of the Conquistadors across the lands of Rancho Viejo making movies like "The Lone Ranger," "The Man From Laramie," and "Silverado."

Enjoy the Trails

Today, the trails at Rancho Viejo celebrate the people who have preceded us in history. The land is peaceful and its drama is to be found in its panoramic vistas, rolling hills, rich arroyos, wildlife and abundant native pinon, juniper, chamisa... and the light whistling of the wind. History has a foothold here, and we are all just visitors in time.



These trails are open for those who wish to:



These are not allowed:



Sat. July 7, 2012, It's...

FORGOTTEN BUT NOT GONE

A study ride in
conjunction
with the
RE: MIKE project
<http://remikeable.com>

for more
info. on this ride
contact
timro@hotmail.com
629-5647

A Very Slow Bike Ride
through Santa Fe's
Past, Present & Future

Starring...

N.M. Central Railroad
as "The Kennedy Line"
Arroyo de los Pinos
as "The Vanishing Ditch"

with... Acequia Madre – Santa Fe Southern R.R. –
Brunn Hosp. Rail Line - Arroyo de los Pinos, S. Branch

Bring a bike - preferably w/ off-road capability,
Meet @ Tomasita's near the Railyard Depot, 9 a.m.



Pasó por acá...

New Mexico Central Railroad

...ran here,
1903 –
1926

For more
information, come to

RE:MIKE



St. Michael's Village West
Fri., Sept. 21 –
Sun. Sept. 23

www.remikeable.com



Pasó por acá...

New Mexico

Central Railroad

...ran here,

1903 –

1926

For more
information, come to

RE:MIKE



St. Michael's Village West

Fri., Sept. 21 –

Sun. Sept. 23

www.remikeable.com



Pasó por acá...

Brunns Army Hospital Rail Line

...ran here, c. 1942-46

For more information, come to

RE:MIKE



St. Michael's Village West
Fri., Sept. 21 – Sun. Sept. 23

www.remikeable.com



Brunn Hospital
(SFUAD)

Future Site of
LaFarge Library 

Brunn Hospital Line

AT&SF RR
(SF Southern)



Rail Trail and Bruns Army Hospital Line



Ride the
N.M. Central RR!

Type of Gasoline Cars used between Terrance and Santa Fe, New Mexico

Join the . . .

Rail History Cruise

A Slow Bike Ride
for the
New Mexico
Railroad History
Celebration

nmrailroadhistory.com

Mon., Sept. 2,
2019

10 am - noon



AT&SF RR, Bruns
Hospital Spur & more

Meet at El Museo Cultural de Santa Fe

555 Camino de la Familia

Supported by City of Santa Fe and
Santa Fe Conservation Trust

For more info., contact Tim Rogers at
(505) 989-7019 or tim@sfct.org



Aug. 30 - Sept. 2, 2019

Historic Rails



SANTA FE CONSERVATION TRUST

Aug. 30 - Sept. 2, 2019

For info. on **Rails-to-Trails** presentation at El Museo & **Chili Line** outing at La Tierra Trails on Sept. 2, see www.sfct.org



Gallinas River Trail,
Las Vegas NM:
AT&SF Hot Springs Branch
(to Montezuma)

Historic Rails and Trails



Aug. 30 – Sept. 2, 2019



Cinder Rd. and new extension of
Gallinas River Trail, Las Vegas NM:
AT&SF Hot Springs Branch





Five miles to Montezuma NM:
Future Rail History Cruise?

Historic Rails and Trails
2nd Annual
NM RAILROAD HISTORY
CELEBRATION
Aug. 30 – Sept. 2, 2019



Las Vegas Roundhouse

Historic Rails and Trails
2nd Annual
NM RAILROAD HISTORY
CELEBRATION
Aug. 30 – Sept. 2, 2019



How are historic rail lines remembered?

- Keep the train running
- Maintain / rebuild
- Protect
- Provide Interpretation
- Re-purpose as trail



NMCRR rail bed,
s. of Rabbit Rd.



Historic Rails and Trails



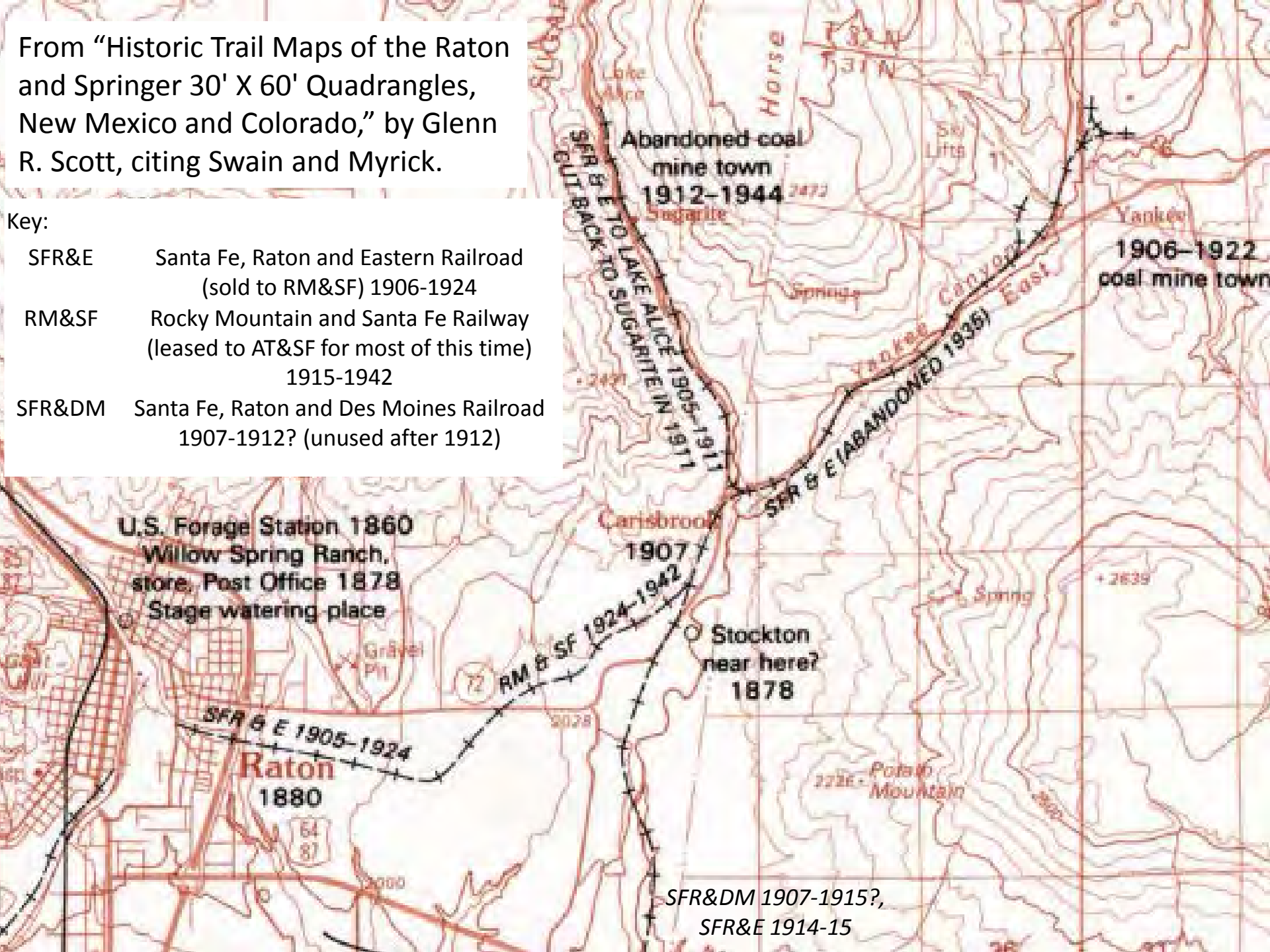
Aug. 30 – Sept. 2, 2019

Raton NM: Existing and Future Rail Trails along the Santa Fe, Raton and Eastern Railroad



From "Historic Trail Maps of the Raton and Springer 30' X 60' Quadrangles, New Mexico and Colorado," by Glenn R. Scott, citing Swain and Myrick.

- Key:
- SFR&E Santa Fe, Raton and Eastern Railroad (sold to RM&SF) 1906-1924
 - RM&SF Rocky Mountain and Santa Fe Railway (leased to AT&SF for most of this time) 1915-1942
 - SFR&DM Santa Fe, Raton and Des Moines Railroad 1907-1912? (unused after 1912)



U.S. Forage Station 1860
 Willow Spring Ranch,
 store, Post Office 1878
 Stage watering place

Raton
 1880

Carisbrook

1907

Stockton
 near here?
 1878

Yankee
 1906-1922
 coal mine town

SFR&DM 1907-1915?,
 SFR&E 1914-15

Memorial Roundhouse Park, Raton NM

Santa Fe, Raton & Eastern RR, 1906-24

Rocky Mountain & Santa Fe Railway 1924-42



Raton Railyard – Ruins of Roundhouse





Model of Raton Railyard
City of Raton Museum

Sugarite State Park: Lake Alice Trail

Santa Fe, Raton and Eastern Railroad, 1905-1911



Sugarite State Park, South of Visitor's Center

Santa Fe, Raton & Eastern RR, 1906-24

Rocky Mountain & Santa Fe Railway 1924-42



Bicycle and Pedestrian Route between Raton and Sugarite State Park

Legend

- NM72_Shoulders
- Calm_Local_Streets
- Chicorica_Creek_Trail1
- RM&SF_Rail_Trail
- SFR&DM_RR
- Sugarite_RR_Line1
- SugariteSP_Trails_TPLRough_Diss
- NMStateParks



Thank you!

Tim Rogers

Santa Fe Conservation Trust

tim@sfct.org

Also thanks to...

- Keith Wilson, Santa Fe MPO
- Jim Gallegos, City of Santa Fe GIS Unit
- Fred Friedman, Railroad Historian, NMCRR Buff
- Shannon Murphy, RE-MIKE
- LaFarge Public Library
- Charlie O'Leary, Santa Fe Cons. Trust
- Sarah Noss, Santa Fe Conservation Trust

